



TENORI-ON

THIS DEVICE COMPLIES WITH PART 15 OF THE FCC RULES. OPERATION IS SUBJECT TO THE FOLLOWING TWO CONDITIONS: (1) THIS DEVICE MAY NOT CAUSE HARMFUL INTERFERENCE AND (2) THIS DEVICE MUST ACCEPT ANY INTERFERING RECEPTION INCLUDING INSTANTANEOUS THAT MAY CAUSE UNDESIRABLE OPERATION.

RATED VOLTAGE: 5.0V DC
AC POWER ADAPTOR: YAMAHA PA300
WARRANTY INFORMATION: MADE IN JAPAN

THIS CLASS B DIGITAL APPARATUS COMPLIES WITH CANADIAN ICES-005.
CET APPAREIL NUMÉRIQUE DE LA CLASSE B
CET APPAREIL NE DÉGÈNE PAS D'INTERFÉRENCES RADIOÉLECTRIQUES.

N59

Sequencer

Note Resolution 1/8 = 96 clocks

Gate Time 10 ms ~ 9990 ms

Octaves -5 ~ +5

Tempo (BPM) 40 ~ 240

Scales 9 types

Transpose -7 ~ +8

Performance Modes 6 types: Score, Random, Draw, Bounce, Push, Solo

Other Functions Clock, power-save, synchronized performance with two TENORI-ON instruments, recording, TENORI-ON song playback

Maximum Active Notes Push Mode: 64, Random Mode: 64 points, Draw Mode: 64 points

Tone Generator

Tone Generator Type AWM2

Maximum Polyphony 32 notes

Preset Voices 253 (239 normal, 14 drum kit)

Effects 2 processors

Reverb: 10 types, Chorus: 5 types

Sampling 3 voices (Raw audio with a maximum length of 0.97 sec., up to 16 samples per voice)

*Using the supplied TENORI-ON User Voice Manager software.

Card

Save Song, Block, Layer, Setting, Sampling

Load Song, Block, Layer, Setting, Sampling

Rename Song, Block, Layer, Setting, Sampling

Delete Song, Block, Layer, Setting, Sampling

Format

Yamaha Corp. reserves the right to change or modify products or specifications at any time without prior notice. Since specifications, equipment or options may not be the same in every locale, please check with your Yamaha dealer.

YAMAHA CORPORATION Printed in the U.K.

<http://www.global.yamaha.com/tenori-on>

P10020084

designed by Toshio Iwai & Yamaha

TNR-W

L1

L2

L3

L4

L5

CLEAR

YAMAHA

TENORI-ON

designed by Toshio Iwai & Yamaha

TNR-W

R1

R2

R3

R4

R5

TENORI-ON

LAYER: 01-Score BLOCK: 01

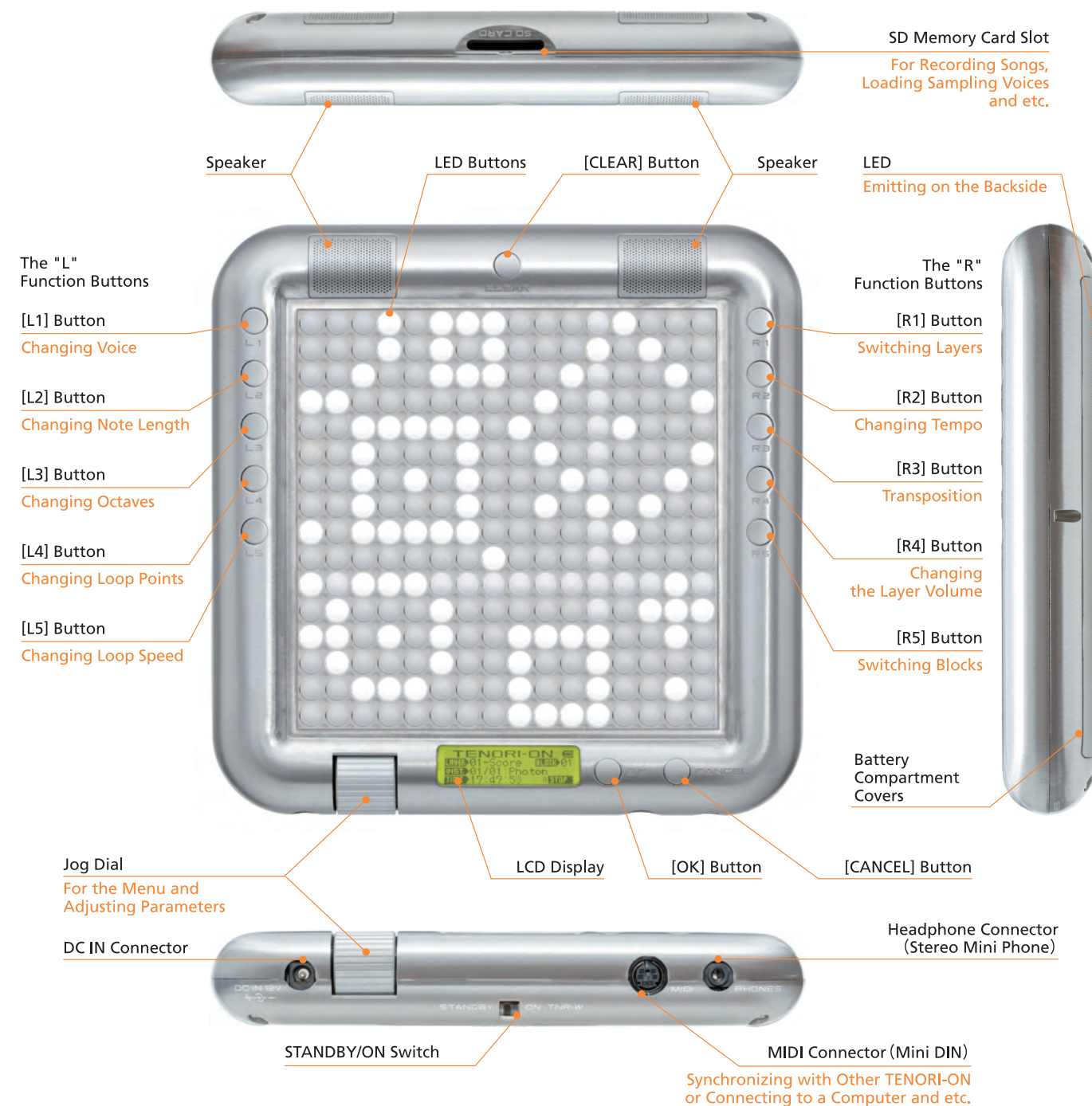
INST: 01/01: Photon

TIME: 17:47:55 STOP

OK CANCEL



TENORI-ON is a unique 16 x 16 LED button matrix performance controller with a stunning visual display. For DJs & producers it is a unique performance tool enabling them to perform using MIDI and load TENORI-ON with samples to 'jam / improvise' within their set BPMs.



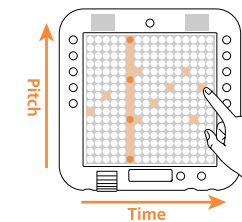
TENORI-ON "Modes"

The TENORI-ON provides six different performances and sound/light modes for broad performance versatility.

SCORE MODE

Make a basic loop

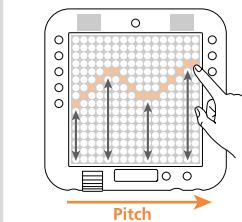
You can make active notes that will play repeatedly.



BOUNCE MODE

Make a loop by bouncing

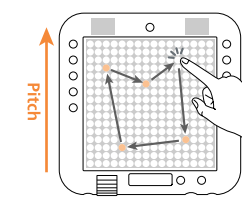
The light will "drop" from that button, bounce back from the bottom of the matrix, and repeat.



RANDOM MODE

Make a figure loop

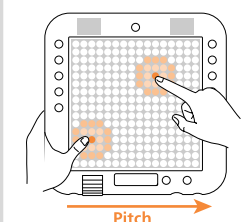
You can make the lights will "travel" from note to note, in the order entered, and the active notes will sound when the traveling light passes over them.



PUSH MODE

Generate a continuous sound

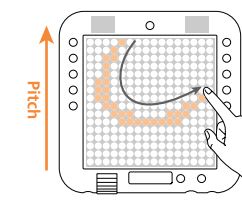
The sound will begin to change gradually while the flashing surrounding that button gets brighter and wider.



DRAW MODE

Repeat just what you played

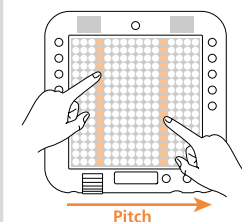
You can press individual LED buttons or draw lines or curves on the matrix, and those actions will be played back and repeated.



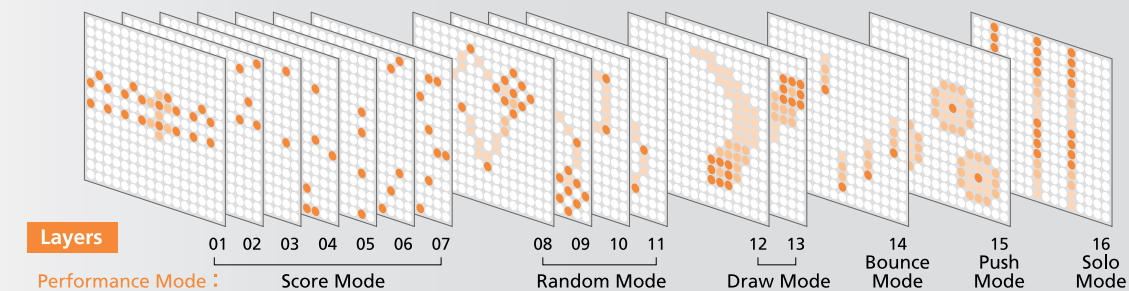
SOLO MODE

Play the solo performance

The sound will repeat until the button is released. You can change the interval between repeats.



Layers TENORI-ON layers can be thought of as performance parts or recording tracks. The TENORI-ON has a total of 16 layers. Separate notes and voices can be assigned to each layer, and all layers can be played together in synchronization. The 16 layers are divided into six performance mode groups as shown in the illustration below.



→ TENORI-ON has more functions. For the details, please visit the TENORI-ON web page. <http://www.global.yamaha.com/tenori-on>