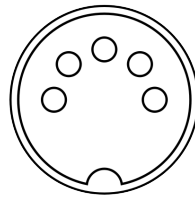




MIDI CONTINUOUS CONTROLLER REFERENCE



For Line 6 Hardware & GearBox Software
Mac[®] OS X, Windows[®] XP[®] & Windows[®] Vista[®]

August 2009

Table of Contents

Line 6 Products and MIDI	1•1
What's MIDI?.....	1•2
MIDI In & Out.....	1•2
USB.....	1•2
MIDI Channel	1•2
Making the connection	1•3
GearBox SysEx Control.....	1•7
GuitarPort Online Player Transport Control.....	1•8
MIDI Channel Selection.....	1•9
MIDI CC Reference Tables	2•1
Line 6 Hardware MIDI CC Reference Table	2•2
GearBox Software MIDI CC Reference Table.....	2•14
MIDI CC Range Reference - Model Tables.....	3•1
Pocket POD Model Tables	3•1
Floor POD Model Tables	3•3
POD 2.0 Model Tables.....	3•5
PODxt Model Tables.....	3•7
Bass PODxt Model Tables.....	3•11
POD X3 Model Tables.....	3•13
Flextone III Model Tables.....	3•17
HD 147 Model Tables.....	3•19
Vetta II Model Tables	3•21
GearBox Software Model Tables	3•23
Effects Model Tables (All Line 6 Products)	3•29

Line 6, POD, POD 2.0, Bass PODxt, POD X3, PODxt, Vetta, Flextone, HD 147, FBV, GuitarPort Online and Gear-Box are trademarks of Line 6, Inc. All other product names, trademarks, and artists' names are the property of their respective owners, which are in no way associated or affiliated with Line 6.

Copyright © 2009 Line 6, Inc.

LINE 6 PRODUCTS AND MIDI

This document describes the setup of Line 6 devices for MIDI communication and includes reference tables for the products' MIDI controllers. Many Line 6 products allow their parameters to be tweaked remotely by external MIDI controller hardware units (including the Line 6 FBV MkII devices as well as 3rd party controllers), and/or software MIDI sequencers. These items communicate with Line 6 products by sending MIDI Continuous Controller (MIDI CC), Bank Change, Program Change and/or MIDI System Exclusive (SysEx) commands. A MIDI CC is the most common type of message used for this task, and what is used for accessing most functions on Line 6 products. A MIDI CC message consists of a "controller" number followed by a data value. When you access a button, slider, knob or pedal on your MIDI controller device, or when you configure your MIDI sequencing software to output MIDI control data, this MIDI CC command is what is transmitted, which makes it possible to do things such as remotely control the Volume level or other parameters of your Line 6 hardware or software in real-time! Likewise, some Line 6 products' functions, (such as Monitor levels in the Line 6 GearBox software), can be remotely accessed using MIDI SysEx commands. Additionally, these same Line 6 products are also capable of transmitting MIDI control data. This makes it possible to control another software or hardware device's parameters in real-time via your Line 6 product.

The key to all this communication is the MIDI CC and SysEx mapping. The following pages include MIDI CC master tables for both Line 6 hardware and GearBox™ software, as well as model tables for each product to serve as a reference document of MIDI assignments for the parameters of several Line 6 products. With this information you can set the MIDI CC values for your controller device to match the Line 6 parameters to be controlled. References for MIDI SysEx commands can be found in the section ["GearBox SysEx Control" on page 1•7](#). The Line 6 products included in this reference are:

- Pocket POD®
- Floor POD® Plus
- POD® 2.0, POD® Pro
- POD® xT, POD® xT Pro & POD® xT Live
- Bass POD® xT, Bass POD® xT Pro & Bass POD® xT Live
- POD® X3 Live, POD® X3 Pro
- Flextone™ III
- HD147®
- Vetta™ II & Vetta™ II HD
- TonePort® UX1, UX2, UX8, KB37, GX, D.I.
- POD Studio™ UX1, UX2, UX8, KB37
- FBV Shortboard™ MkII & FBV Express™ MkII Series Controllers
- GearBox™ Software, Version 3.7 and later (please visit the [line6.com Software Downloads](http://line6.com/SoftwareDownloads) page to get the latest GearBox version)

What's MIDI?

MIDI (Musical Instrument Digital Interface) is a communications protocol designed to allow various music-making machines and /or software to exchange information. It allows one device to control another, and several devices to all be used together in coordination. To follow are details on the MIDI connections for your Line 6 device.

MIDI In & Out

Hardware devices commonly use standard 5-pin MIDI cables, which are always connected from the MIDI Out jack of the sending device to the MIDI In jack of the receiving device. Each connection is a one-way street: information flows from the OUT of one device to the IN of another device. To allow information to flow back, you must connect a second cable, from IN to OUT. Several of the Line 6 hardware devices include MIDI jacks and can be connected to other MIDI devices in this manner.

To send and receive MIDI data to and from a computer, unless your MIDI controller device includes a USB connection, a MIDI Interface device is required. This type of device allows you to connect your MIDI 5-pin cables to a MIDI “Port” and then routes the MIDI data between the Port and computer via a USB or serial port connection. These days, you’ll often see MIDI synthesizers, controllers and other MIDI devices simply come with just a USB connection, and all MIDI data communication uses this rather than 5-pin MIDI cables (see the next section for more on USB).

USB

If you are using a Mac® or Windows® computer in your setup, then you can exchange MIDI data via USB rather than via a 5-pin MIDI cable connection. USB is commonly used to route MIDI data among hardware and software where software-based USB MIDI In and Out ports are created on the computer. These “virtual” MIDI In and Out ports are accessible within software applications on the computer, and function very much the same as “hardware” MIDI ports. Many computer-based Line 6 products such as Pocket POD, PODxt, BASS PODxt, TonePort, POD Studio, and FBV MkII devices utilize device drivers that establish Line 6 USB MIDI ports on your computer, allowing them to be connected to the MIDI ports of other computer-based hardware and MIDI software.

MIDI Channel

MIDI allows sixteen different “channels” of information to be transmitted and received through one MIDI port. (The MIDI channel is independent of, and has nothing to do with, your Line 6 device’s channels for storing individual Tones). You tune your Line 6 POD or Amplifier or MIDI/DAW software in to listen to a particular MIDI channel (like choosing a channel on a TV or a station on a radio), and make sure the device that you want your Line 6 device to listen to is transmitting on that same MIDI Channel.

Making the connection

To follow are details for connecting your Line 6 product to other devices for MIDI communication.

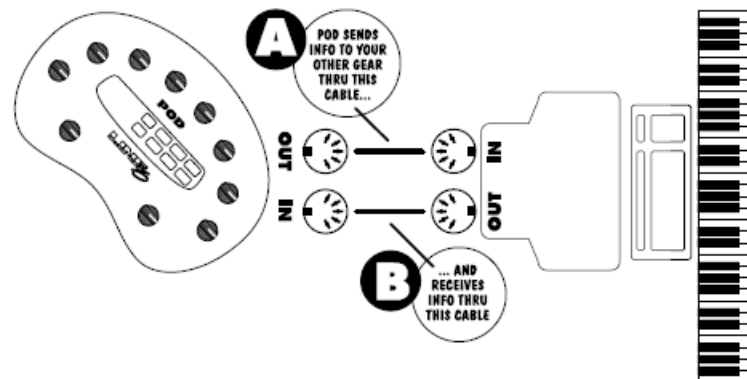
POD X3 Live & POD X3 Pro

POD X3 Live & Pro devices include 5-Pin MIDI In and Out jacks, and it is necessary for you to use these connections to receive and transmit MIDI data. POD X3 Live and Pro can be controlled by receiving MIDI messages coming into the 5-Pin MIDI Input. POD X3 Live and Pro also transmits MIDI data out through the 5-Pin MIDI Output jack, allowing you to control or communicate other MIDI hardware and software.

Note: POD X3 Live and POD X3 Pro devices do not utilize the USB connection for MIDI communication. The POD X3 “Bean” device does not support MIDI communication.

Floor POD Plus, POD 2.0, POD Pro, Flextone III, HD 147 and Vetta II

Each of these Line 6 devices includes two MIDI 5-pin cable connections: MIDI In & MIDI Out. You connect to other MIDI devices by plugging MIDI cables to these In & Out jacks. As mentioned above, be sure to use two MIDI cables, and connect between the MIDI Out of one device to the MIDI In of the other, and vice-versa. If you are connecting a 3rd party external MIDI Controller device to your Line 6 POD or Amplifier, then you can typically connect the controller directly to the Line 6 device with two MIDI cables this way. If you are connecting to a computer, then you’ll need a MIDI Interface device that offers at least one physical MIDI port (one MIDI In and one MIDI Out jack). Then go into the MIDI software’s MIDI Preferences or Control Panel dialog and choose the 3rd party MIDI Interface’s MIDI In and MIDI Out port to allow the software to communicate to your connected Line 6 device. MIDI Interface units are relatively inexpensive and can be found at most music shops. Most modern MIDI Interface units connect to your computer via USB.



Connecting to a computer MIDI Interface with MIDI cables

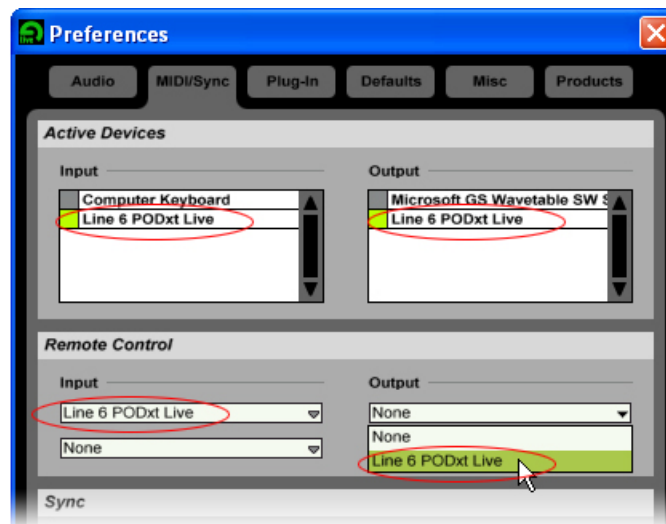
PODxT, Bass PODxT, TonePort, POD Studio & Pocket POD

All PODxT and Bass PODxT family devices include both USB and 5-pin MIDI jacks. It is recommended to use the USB connection for your MIDI connectivity with these devices when connecting to your computer. Alternatively, you can use a 5-Pin MIDI cable connection as described above if it is the only way to connect to your other MIDI device.

POD Studio, TonePort and GuitarPort devices include a USB MIDI driver that allows other Windows® or Mac® software applications to access “virtual” USB Line 6 MIDI In and Out ports. This allows you to send and receive MIDI control data between Line 6 GearBox and 3rd party MIDI software. Note that POD Studio & TonePort UX2, UX8 and KB37 include Footswitch and/or Expression Pedal inputs that allow you to take control of many parameters in the GearBox software. These Footswitch and Pedal connections actually send MIDI data, and are configurable within the GearBox Preferences dialog. Please see the [GearBox User Guide](#) for how to access these settings. See the GearBox table in this document to reference the list of controllable parameters in GearBox, and their MIDI CC assignments.

Pocket POD has a mini USB jack, which provides MIDI connectivity to your computer. There is no need to install a driver USB for MIDI operation - Pocket POD utilizes a “class-compliant” USB driver (i.e. - a driver already included with the Mac OS X, Windows XP or Windows Vista operating system). Just connect Pocket POD via USB cable to your computer and the operating system will “install” the device automatically.

When connected to your computer via USB cable, the Line 6/class-compliant drivers will expose “virtual” MIDI ports that are accessible to other computer-connected MIDI hardware and MIDI software. For example, if you are using a MIDI sequencing software, you should be able to go into that software’s MIDI control panel and access the Line 6 MIDI In and PODxt MIDI out ports, such as within the Ableton Live Lite Line 6 Edition’s MIDI Preferences dialog shown here:



The MIDI Preferences panel window in Ableton Live. The Line 6 MIDI “ports” are selectable for any of Live’s MIDI In or Out functions

Once the Line 6 MIDI port is configured in the MIDI software, you can then choose it for any MIDI track and/or MIDI control options within your sequencing projects in the software. This allows you to use your POD's on-board knobs & pedal to control parameters in the software. Or, this also allows you to have existing MIDI control data within a MIDI track of the sequencer send that data out to your POD to control one of its parameters. Check your sequencing software's documentation for more specifics on its MIDI capabilities.

Note that if you are connecting your Line 6 device to your computer using MIDI cables to and from a MIDI Interface (such as an M-Audio MIDISport™, MOTU Express™, etc.) then the MIDI Interface is the "MIDI Device" that will be visibly selectable in your MIDI software's control panel. However, your Line 6 device will transmit and receive MIDI data through this device and allow you to use it to control the software, or to be controlled from the software.

FBV Shortboard & Express MkII Controllers

Just like the first generation Line 6 FBV Series devices, the latest FBV "MkII" controllers connect to Line 6 amps and PODs that include the RJ-45 cable connection, allowing remote control for these products' settings. New for the FBV Shortboard and Express MkII Series devices is that they also offer a USB connection and new Line 6 FBV Control software, allowing them to function as external MIDI controller devices for Line 6 GearBox and other MIDI/DAW applications on your Mac® or Windows® computer!

When connected to your computer via USB, the FBV MkII device's main function is, of course, to transmit MIDI control data to the MIDI or Digital Audio Workstation (DAW) software that you want to control. As with any USB MIDI controller hardware, you'll need to configure your MIDI/DAW software to receive MIDI data from any of the FBV MkII's USB MIDI Out ports. Typically this is accomplished within the MIDI/DAW software's Options or Preferences, where there is a selector for something such as "External MIDI Controller" or just "MIDI Input". Here you should see the FBV MkII USB MIDI Out ports 1 thru 4 available. You can then configure what type of MIDI control messages your FBV MkII footswitches and Pedals transmit, as well as what MIDI Out ports and channels they transmit on, by using the Line 6 FBV Control application.

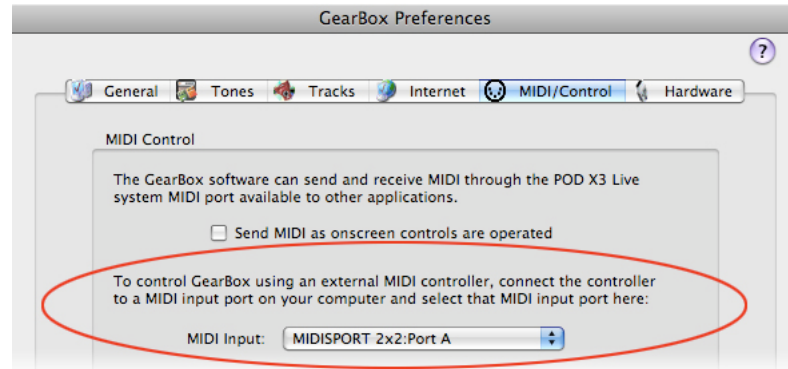
The Line 6 FBV Control application is available as a free download from the line6.com/software page. For more about the FBV MkII USB MIDI and Line 6 FBV Control application, please see the *FBV MkII Advanced User Guide* found on the [FBV MkII Online Help](#) page.

Line 6 GearBox Software

Much like the Line 6 POD and amp hardware discussed above, the Line 6 GearBox software can also have its on-screen knobs, buttons, sliders and model selections controlled remotely via hardware MIDI controller devices (including the Line 6 FBV MkII series controllers), or via MIDI software. Most GearBox functions can be controlled via MIDI CC – please refer to the ["GearBox Software MIDI CC Reference Table"](#) and ["GearBox Software Model Tables"](#) for the MIDI CC mappings. Likewise, GearBox can also *output* MIDI CC data whenever most of its functions are operated, which allows the remote control of other hardware or software products that are capable of responding to MIDI CC messages. Some additional GearBox functions can be controlled via MIDI SysEx commands – please see the following GearBox SysEx Control section.

To configure GearBox to receive MIDI data from an external MIDI controller:

Connect your external MIDI controller device to your computer (either via 5-pin MIDI cables to a MIDI Interface, or via USB if your controller offers it). Next, go to the GearBox Preferences dialog and choose the MIDI/Control tab. To receive MIDI data from a 3rd party external MIDI controller, access the MIDI Input selector, where you can choose the MIDI device or port from which you want GearBox to receive MIDI controller data. If you're using a Line 6 FBV MkII controller, you will be able to select it here to use it to control GearBox:



GearBox Preferences – MIDI/Control tab, Mac OS X

If you are using Windows, the options are the same within the GearBox Preferences > MIDI/Control tab. As shown in the above example, we've selected to receive MIDI Input from a connected M-Audio MIDISPORT 2x2 MIDI Interface – GearBox will receive MIDI data from any MIDI hardware controller connected into the “Port A” MIDI Input jack of the MIDISPORT.

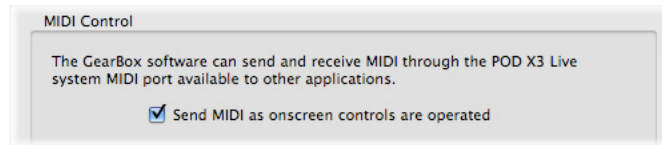
GearBox will automatically receive MIDI data on MIDI Channel 1 from the connected Line 6 USB source hardware, so you'll want to configure your MIDI controller to transmit all its MIDI control commands specifically to MIDI Channel 1. For FBV MkII, the MIDI Channel is selectable for each control in the Line 6 FBV Control application.

If you want to control GearBox from a MIDI/DAW software you can simply set the MIDI sequencer application's MIDI Out to be the MIDI In port of your source Line 6 USB device. For example, you can Set Ableton Live's Preferences - MIDI Input setting to your connected Line 6 TonePort, then MIDI control data can be transmitted from your Ableton Live MIDI track to manipulate GearBox controls in real time during Live's playback. Again, GearBox receives this MIDI data on Channel 1, so you'll need to set your MIDI/DAW software to transmit on this channel. Check your MIDI/DAW software's documentation for details on its particular MIDI output capabilities.

Note – When using a PODxt family device as your USB source device for GearBox, then the PODxt hardware is already a “fixed” MIDI Input device into GearBox, therefore, the Preferences-MIDI/Control tab appears blank. You can plug an external controller into PODxt's 5-Pin MIDI In, or set your MIDI/DAW software to use the PODxt USB MIDI In port to route MIDI data into GearBox.

To configure GearBox to send MIDI data:

In the GearBox Preferences - MIDI/Control tab, simply check the box for “Send MIDI as on-screen controls are operated” (this box is unchecked by default).



The Gearbox MIDI data is automatically transmitted to the USB MIDI Out of the connected Line 6 USB audio interface (your POD Studio, TonePort, GuitarPort or PODxt).

GearBox SysEx Control

Some GearBox and GuitarPort Online (GPO) functions, such as Monitor & Send Levels, can be controlled via MIDI by using SysEx commands. GearBox SysEx messages take on the following format:

F0 00 01 0C 08 <opcode> <data> ... F7

Where:

<opcode> is a single byte opcode (00 – 7F)

Number of bytes in <data> depends on the opcode.

The following table lists the opcodes implemented in GearBox 3.5 and later:

Function	Opcode	Data Size (bytes)	Data Description
Bypass	00	1	Byte 1: 00 for bypass off; 01 for bypass on
Monitor Mute	01	2	Byte 1: Audio stream, 00 = Send 1/2, 01 = Send 3/4 ... 7F = all Byte 2: 01 is mute on; 00 is mute off
Next/Previous Tone	02	1	Byte 1: 01 for next tone; 00 for previous tone
Record Send Level	03	2	Byte 1: Audio stream, 00 = Send 1/2, 01 = Send 3/4 ... 7F = all Byte 2: Gain scale, 00-7F (00 = 0.0 to 7F = 1.0)

Function	Opcode	Data Size (bytes)	Data Description
Monitor Level	04	2	Byte 1: Audio stream, 00 = Send 1/2, 01 = Send 3/4 ...7F = all Byte 2: Gain scale, 00-7F (00 = 0.0 to 7F = 1.0)
GPO Track Level	05	1	Byte 1: Gain scale, 00-7F (00 = 0.0 to 7F = 1.0)
GPO Player Half Speed	06	1	Byte 1: 01 = enable half speed; 0x00 = disable half speed
GPO Player Loop Enable	07	1	Byte 1: 01 = loop enable; 00 = loop disable

GuitarPort Online Player Transport Control

In addition, the following MIDI events are recognized for the Guitar Port Online (GPO) Player transport control. These 3 byte MIDI short messages (not SysEx) are based on the Mackie control specification.

GPO Track Play	90 5E 7F
GPO Track Stop	90 5D 7F
GPO Track FWD Start	90 5C 7F
GPO Track FWD Stop	90 5C 00
GPO Track REW Start	90 5B 7F
GPO Track REW Stop	90 5B 00

TIP: If you are using an FBV MkII controller with GearBox, you can set any of the Controls within the Line 6 FBV Control application's MIDI Command column to "Mackie" and configure the footswitch to toggle these GPO Player transport options! FBV MkII controllers are not configurable to send MIDI SysEx commands.

MIDI Channel Selection

Typically, you can use the default MIDI Channel settings on your Line 6 POD or Amplifier for most setups. But if you have problems with communication between devices, or if you need to use a specific MIDI channel, then you can change the specific MIDI Channel your Line 6 device uses for receiving and transmitting.

Floor POD Plus

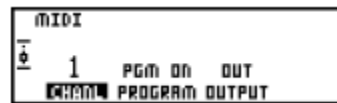
To set Floor POD Plus' MIDI Channel, hold the Manual button and press Save to enter MIDI channel mode. The display will indicate the current MIDI transmit/receive channel. Use the Bank Up/Down footswitches to change the MIDI transmit/receive channel. Selecting "All" places the unit into Omni mode - In Omni mode the unit receives MIDI on all channels and transmits only on channel 1. Press the Manual button to save the MIDI channel selection and exit MIDI channel mode.

POD 2.0, POD Pro

To set POD's MIDI Channel, press the MIDI button (which will light up). The single-digit display will show you the current channel POD is tuned in to – the default is Channel 1. Use the Up and Down arrows to select a different MIDI channel from 1 thru 16. POD displays channels 10 through 16 by lighting up the decimal point to the right of the single digit. So "2." means channel 12. You can also set POD to listen to all channels (Omni mode) by selecting "A" (A for all) for the MIDI channel. When in Omni mode, POD transmits on channel 1.

PODxt and Bass PODxt

To set the MIDI Channel on PODxt, PODxt Pro, Bass PODxt or Bass PODxt Pro, press the TUNE/SYSTEM button (which will light up). For PODxt Live or Bass PODxt Live, press the OUTPUT MODE/SYSTEM button so that it lights up. Then, for any of these units, use the Select knob to find the MIDI page that looks like this:

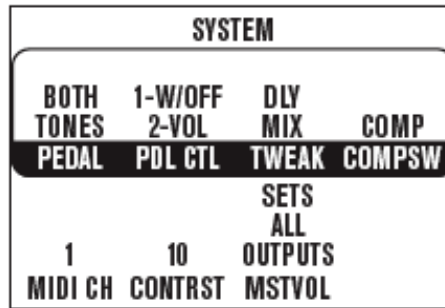


PODxt/Bass PODxt MIDI options

Press the button under CHANL and start spinning the EFFECT TWEAK knob to change the MIDI Channel. You can choose channels 1 thru 16, or OMNI (Omni means PODxt will 'listen' on all MIDI channels, which is fine if it's your only connected MIDI device). PODxt/Bass PODxt always accepts SysEx data on any channel, so if you are only working with SysEx data, this channel setting is only important to determine what channel your PODxt/Bass PODxt will send on.

POD X3 Live, POD X3 Pro

To set the MIDI Channel on POD X3, press and hold the Outputs/Hold for System button for 2 seconds to go to the SYSTEM page:



The POD X3 System page

Choose from MIDI Channel 1-16, or select Omni to have POD X3 respond to all MIDI channels, while transmitting on Channel 1. When MIDI Program Change messages 0-127 are received, POD X3 Live will recall User Presets 01A-32D, and it will send those same program changes as presets are selected from the POD X3. It also echoes all Program Change messages it receives to the MIDI Out, so they can be connected “thru” to another MIDI device.

Vetta II and Vetta II HD

To set the MIDI Channel on a Vetta II Combo or HD amplifier, press the SYSTEM SETUP button (which will light up), then turn the PAGE knob until the LCD displays page 3. Select the knob directly beneath the MIDI CHAN item in the display and adjust it to the desired channel number (1-16).

Flexitone III, HD 147, and Pocket POD

Flexitone III, HD 147, and Pocket POD always communicate on MIDI Channel 1 as a fixed setting.

GearBox Software

GearBox receives and sends MIDI data on Channel 1 as a fixed setting.



FBV Shortboard & Express MkII Controllers

The FBV MkII controllers are capable of transmitting on any MIDI Channel, 1 thru 16, on any of four USB MIDI Out ports. This is configurable within the Line 6 FBV Control application. Note the options in the MIDI Port and MIDI Channel columns in the Line 6 FBV Control application allow you to set these individually, per Control, and these Port and Channel settings are saved with your FBV Preset.

Also check out the [Line 6 Product Manuals](#) page to grab additional info on Line 6 gear, recording, computer optimizations and more!

MIDI CC REFERENCE TABLES

The following sections include MIDI reference tables. The first MIDI CC reference table on [page 2•2](#) is specifically for Line 6 hardware devices, followed by a table for the Line 6 GearBox software on [page 2•14](#). These tables list all controllable parameters, the MIDI CC controller number and values assigned to each parameter, as well as descriptions for what is being controlled. To follow are descriptions of the columns shown in the Line 6 Hardware and GearBox MIDI CC tables.

Parameter - The table lists all parameters that can be remotely controlled by MIDI CC's, and you can see that many parameters are common to several Line 6 hardware devices.

Notes - Some Parameters may not be too obvious by name alone, or have some special behaviors for how their data value ranges are applied, so this column is where to look for this info.

Product Columns - (Line 6 Hardware chart) There are 5 sets of paired columns that refer to the 5 product types. Note that POD_{XT} and Bass POD_{XT} are each one paired column set – these each include all POD_{XT} and Bass POD_{XT} products (XT, XT Pro and XT Live), unless otherwise noted. Each has a column for “TX” (transmit) and “RX” (receive). A check mark in the slot means that the control of the parameter via MIDI CC is supported for the product type.

MIDI CC# and Range - This set of columns lists the assigned MIDI CC controller number, and the range for the data values supported. You can see that most CCs offer a range from 0 to 127, which typically map to a knob or slider. If the parameter is a simple on/off type, then usually values from 0 to 63 will all set that parameter to “off” and 64 to 127 will set the parameter to “on”. Some parameters, such as the various “Model Select” items, will number only from 0 up to a number less than 127, since each value represents each Model that is available – all higher values have no related function (see the Model Tables section*). Check the Notes column to see if other behaviors apply.

*The [Model Tables](#) section provide the detailed breakdown of MIDI CC range values that are assigned to the individual Amp, Cabinet and Effects Models and Effect parameters. These are the available Model types for each Amp/Cab/Effect Model Select parameter, and each Model is recalled using the specific range value for the assigned MIDI CC.

Line 6 Hardware MIDI CC Reference Table

Line 6 Hardware MIDI CC Reference Table																				
Parameter	Notes	MIDI CC # and Range			POD 2.0		PODXT		Bass PODXT		Flex III HD147		Vetta II		Floor POD Plus		Pocket POD		POD X3 Live /Pro	
		CC#	Min	Max	TX	RX	TX	RX	TX	RX	TX	RX	TX	RX	TX	RX	TX	RX	TX	RX
Tweak		1	0	127	√	√	√	√	√	√					√	√	√	√	√	√
Pedal 1		1	0	127									√	√						
Delay Tweak		2	0	127							√	√								
Tweak 2		2	0	127											√	√				
Pedal 2		2	0	127									√	√						
Modulation Tweak		3	0	127							√	√								
Wah Position		4	0	127	√	√	√	√	√	√	√	√	√	√	√	√		√	√	√
Compressor Gain		5	0	127			√	√			√	√							√	√
Split/Blend	0=Blend/Blend, 1=Split/Blend, 2=Blend/Split, 3=Split/Split	6	0	3																
Volume Pedal	Realtime (not saved in Channel or Setup)	7	0	127	√	√	√	√	√	√	√	√	√	√	√	√	√	√	√	√
Amp 2 Pan	0=Full Left, 64=Center, 127=Full Right	8	0	127																
Compression Threshold		9	0	63			√	√	√	√	√	√								
Amp 1/Studio Pan	0=Full Left, 64=Center, 127=Full Right	10	0	127				√		√									√	√
Amp 1 Model w/ Amp defaults	Loads Amp with Amp Defaults. Range depends on device (see model tables)	11	0	-			√	√	√	√	√	√							√	√

Line 6 Hardware MIDI CC Reference Table																				
Parameter	Notes	MIDI CC # and Range			POD 2.0		PODxT		Bass PODxT		Flex III HD147		Vetta II		Floor POD Plus		Pocket POD		POD X3 Live /Pro	
		CC#	Min	Max	TX	RX	TX	RX	TX	RX	TX	RX	TX	RX	TX	RX	TX	RX	TX	RX
Amp 1 Model w/out Amp defaults	Loads Amp Model without Amp Model Defaults. Range depends on device (see model tables)	12	0	-				✓		✓	✓	✓								
Amp 1 Model w/ Amp defaults	Loads Amp Model without Amp Model Defaults. Range depends on device (see model tables)	12	0	-	✓	✓							✓	✓	✓	✓	✓	✓		
Amp 1 Drive		13	0	127	✓	✓	✓	✓	✓	✓	✓	✓	✓	✓	✓	✓	✓	✓	✓	✓
Mic Pre Amp Param 0		13	0	127																
Amp 1 Bass		14	0	127	✓	✓	✓	✓	✓	✓	✓	✓	✓	✓	✓	✓	✓	✓	✓	✓
Mic Pre Amp Param 1		14	0	127																
Amp 1 Mid		15	0	127	✓	✓	✓	✓			✓	✓	✓	✓	✓	✓	✓	✓	✓	✓
Mic Pre Amp Param 2		15	0	127																
Low Mid		15	0	127					✓	✓										
Amp 1 Treble		16	0	127	✓	✓	✓	✓			✓	✓	✓	✓	✓	✓	✓	✓	✓	✓
Mic Pre Amp Param 3		16	0	127																
High Mid		16	0	127					✓	✓										
Amp 1 Channel Volume		17	0	127	✓	✓	✓	✓	✓	✓	✓	✓	✓	✓	✓	✓	✓	✓	✓	✓
Mic Pre Amp Param 4		17	0	127																
Reverb Level		18	0	127	✓	✓	✓	✓			✓	✓			✓	✓	✓	✓	✓	✓

Line 6 Hardware MIDI CC Reference Table																				
Parameter	Notes	MIDI CC # and Range			POD 2.0		PODxT		Bass PODxT		Flex III HD147		Vetta II		Floor POD Plus		Pocket POD		POD X3 Live /Pro	
		CC#	Min	Max	TX	RX	TX	RX	TX	RX	TX	RX	TX	RX	TX	RX	TX	RX	TX	RX
Effect Model	Range depends on device (see model tables)	19	0	-											√	√				
Effect Setup		19	0	63	√	√	√	√	√	√							√	√		
Drive 2 (Only if Amp Type = Layer)	Non-linear mapping	20	0	127	√	√	√	√			√	√				√		√	√	√
EQ Freq 1 (low shelving)	Non-linear mapping	20	0	127	√	√	√	√			√	√								
EQ Freq 1 (low shelving)	Non-linear mapping	20	0	127					√	√										
Amp 1 Presence		21	0	127	√	√	√	√			√	√	√	√				√	√	√
Mic Pre Amp Param 5		21	0	127																
Treble		21	0	127					√	√										
Noise Gate Enable	0~63=Off ; 64~127=On	22	0	127	√	√	√	√	√	√	√	√	√	√	√	√	√	√	√	√
Gate Threshold	0<>31=-96dB, 32=-96dB...127=0dB	23	32	127		√	√	√	√	√	√	√			√	√	√	√	√	√
Gate Decay	0=.1msec; 127=3000msec	24	0	127		√	√	√	√	√	√	√			√	√		√	√	√
Stomp Enable	0~63=Off ; 64~127=On	25	0	127	√	√	√	√	√	√							√	√	√	√
Drive/Boost	0~63=Off ; 64~127=On	25													√	√				
Comp Enable	0~63=Off ; 64~127=On	26	0	127	√	√	√	√	√	√	√	√	√	√			√	√	√	√
Volume Boost	0~63=Off ; 64~127=On	26	0	127											√	√				
Stomp Param 1 MSB	Not currently in use	27	0	127																
Presence Boost	0~63=Off ; 64~127=On	27	0	127											√	√		√		
Delay Enable	0~63=Off ; 64~127=On	28	0	127	√	√	√	√	√	√	√	√	√	√	√	√	√	√	√	√
Modulation Param 1		29	0	127			√	√	√	√		√							√	√

Line 6 Hardware MIDI CC Reference Table																				
Parameter	Notes	MIDI CC # and Range			POD 2.0		PODxT		Bass PODxT		Flex III HD147		Vetta II		Floor POD Plus		Pocket POD		POD X3 Live /Pro	
		CC#	Min	Max	TX	RX	TX	RX	TX	RX	TX	RX	TX	RX	TX	RX	TX	RX	TX	RX
Delay Param 1 MSB		30	0	127		✓	✓	✓	✓	✓		✓			✓	✓		✓	✓	✓
Delay Param 1 Note value	1=Whole, 2=Dotted Half, 3=Half, 4=Half Triplet, 5=Dotted Quarter, 6=Quarter, 7=Quarter Triplet, 8=Dotted Eighth, 9=Eighth, 10=Eighth Triplet, 11=Dotted Sixteenth, 12=Sixteenth, 13=Sixteenth Triplet	31	0	127															✓	✓
EQ Freq 2 (peaking)	Non-linear mapping	32	0	127					✓	✓										
Delay Regeneration		32	0	127		✓									✓	✓		✓		
Delay Param 2		33	0	127			✓	✓	✓	✓		✓			✓	✓			✓	✓
Delay Mix		34	0	127		✓	✓	✓	✓	✓		✓			✓	✓		✓	✓	✓
Delay Param 3		35	0	127			✓	✓	✓	✓		✓							✓	✓
Reverb Enable	0~63=Off ; 64~127=On	36	0	127	✓	✓	✓	✓				✓	✓	✓	✓	✓	✓	✓	✓	✓
Reverb Model	Range depends on device (see model tables)	37	0	127		✓	✓	✓				✓				✓		✓	✓	✓
Reverb Decay		38	0	127		✓	✓	✓				✓			✓	✓		✓	✓	✓
Reverb Tone		39	0	127		✓	✓	✓				✓				✓		✓	✓	✓
Reverb Diffusion		40	0	127		✓									✓			✓	✓	✓
Reverb Pre-Delay		40	0	127			✓	✓				✓								
Reverb Density		41	0	127		✓										✓		✓		
Reverb Pre/Post	0~63 = Pre-Amp Model, 64~127 = Post-Amp Model	41	0	127		✓	✓	✓				✓							✓	✓

Line 6 Hardware MIDI CC Reference Table																				
Parameter	Notes	MIDI CC # and Range			POD 2.0		PODxT		Bass PODxT		Flex III HD147		Vetta II		Floor POD Plus		Pocket POD		POD X3 Live /Pro	
		CC#	Min	Max	TX	RX	TX	RX	TX	RX	TX	RX	TX	RX	TX	RX	TX	RX	TX	RX
Compression Ratio		42	0	127		√									√		√			
EQ Freq 2 (peaking)	Non-linear mapping	42	0	127			√	√											√	√
EQ Freq 3 (peaking)	Non-linear mapping	42	0	127					√	√										
Wah Enable	0~63=Off ; 64~127=On	43	0	127		√	√	√	√	√	√	√			√	√		√	√	√
Pedal 1 Enable	0~63=Off ; 64~127=On	43	0	127									√	√						
Wah Model		44	0	127															√	√
Modulation lo-cut		44	0	127					√	√										
Wah Bottom Frequency		44	0	127											√		√			
Wah Top Frequency		45	0	127		√									√		√			
Delay/Reverb lo-cut		45	0	127					√	√										
Volume Pedal Maximum		45	0	127															√	√
Volume Pedal Minimum		46	0	127		√	√	√			√	√			√		√	√	√	√
EQ Pre/Post	0~63 = Pre-Amp Model, 64~127 = Post-Amp Model	46	0	127					√	√										
Volume Pre/Post	0~63 = Pre-Amp Model, 64~127 = Post-Amp Model	47	0	127		√	√	√	√	√		√			√		√	√	√	√
Volume Swell Enable		48	0	127		√											√			
D.I.>Model		48	0	127					√	√										

Line 6 Hardware MIDI CC Reference Table																				
Parameter	Notes	MIDI CC # and Range			POD 2.0		PODxT		Bass PODxT		Flex III HD147		Vetta II		Floor POD Plus		Pocket POD		POD X3 Live /Pro	
		CC#	Min	Max	TX	RX	TX	RX	TX	RX	TX	RX	TX	RX	TX	RX	TX	RX	TX	RX
Vol Swell Ramp Time		49	0	127		✓									✓		✓			
D.I. Delay		49	0	127					✓	✓										
Mod Enable	0~63=Off ; 64~127=On	50	0	127	✓	✓	✓	✓	✓	✓	✓	✓	✓	✓	✓	✓	✓	✓	✓	✓
Chorus/Flange Speed		51	0	127		✓									✓		✓			
Modulation Param 1 Note value	1=Whole, 2=Dotted Half, 3=Half, 4=Half Triplet, 5=Dotted Quarter, 6=Quarter, 7=Quarter Triplet, 8=Dotted Eighth, 9=Eighth, 10=Eighth Triplet, 11=Dotted Sixteenth, 12=Sixteenth, 13=Sixteenth Triplet	51	0	13				✓	✓	✓	✓		✓						✓	✓
Chorus/Flange Depth		52	0	127		✓									✓		✓			
Mod Param 2		52	0	127			✓	✓	✓	✓		✓							✓	✓
Chorus/Flange Regen.		53	0	127		✓									✓		✓			
Mod Param 3		53	0	127			✓	✓	✓	✓		✓							✓	✓
Chorus PreDelay		54	0	127		✓									✓		✓			
Mod Param 4		54	0	127			✓	✓	✓	✓		✓							✓	✓
Rotary Speed		55	0	127		✓									✓		✓			
Mod Param 5		55	0	127					✓	✓									✓	✓
Rotary Max Speed		56	0	127		✓									✓		✓			
Mod Mix		56	0	127			✓	✓	✓	✓		✓							✓	✓

Line 6 Hardware MIDI CC Reference Table																				
Parameter	Notes	MIDI CC # and Range			POD 2.0		PODxT		Bass PODxT		Flex III HD147		Vetta II		Floor POD Plus		Pocket POD		POD X3 Live /Pro	
		CC#	Min	Max	TX	RX	TX	RX	TX	RX	TX	RX	TX	RX	TX	RX	TX	RX	TX	RX
Rotary Min Speed		57	0	127		√									√		√			
Mod Pre/Post	0~63 = Pre-Amp Model, 64~127 = Post-Amp Model	57	0	127			√	√	√	√		√							√	√
Tremolo Speed		58	0	127		√									√		√			
Mod Model		58	0	-			√	√	√	√	√	√							√	√
Tremolo Depth		59	0	127		√									√		√			
Stomp Param 1 LSB	Not currently in use	59	0	127															√	√
EQ Freq 3 (peaking)	Non-linear mapping	60	0	127			√	√											√	√
EQ Freq 4 (peaking)	Non-linear mapping	60	0	127					√	√										
Mod Param 1 LSB		61	0	127			√	√	√	√		√							√	√
Delay Time (Dbl Precision)		62	0	127		√									√	√		√		
Delay Param 1 LSB		62	0	127			√	√	√	√		√							√	√
EQ Enable	0~63=Off ; 64~127	63	0	127			√	√	√	√			√	√					√	√
Tap Tempo	64-127 = a Tap	64	0	127	√	√	√	√	√	√	√	√	√	√	√	√	√	√	√	√
Pedal Assign	0~41 = Wah/Off - Volume; 42~85 = Tweak-Volume; 86~127 = Wah/Vol - Tweak	65	0	127			√	√	√	√									√	√

Line 6 Hardware MIDI CC Reference Table																				
Parameter	Notes	MIDI CC # and Range			POD 2.0		PODXT		Bass PODXT		Flex III HD147		Vetta II		Floor POD Plus		Pocket POD		POD X3 Live /Pro	
		CC#	Min	Max	TX	RX	TX	RX	TX	RX	TX	RX	TX	RX	TX	RX	TX	RX	TX	RX
Amp/Preamp Bank Select	Determines how CC 11 and 12 messages (Amp Model Select) will be interpreted. 0=load model from Guitar Amp Model set; 1=load model from Bass Amp Model set; 2=Preamps	66	0	2																
Tone 1 or 2 Toggle		66	0	127															√	√
Cab Bank Select	Determines how CC 71 messages (Cab Model Select) will be interpreted. 0=load model from Guitar Cab Model set; 1=load model from Bass Cab Model set	67	0	1																
Dual Tone Enable		67	0	127															√	√
EQ Freq 5 (peaking)	Non-linear mapping	68	0	127					√	√										
Tuner Enable	0~63=Off ; 64~127=On	69	0	127			√	√	√	√		√							√	√
Mic Model Select	Range depends on device (see model tables)	70	0	-			√	√	√	√		√							√	√
Amp 1 Cabinet Type	Range depends on device (see model tables)	71	0	-		√	√	√	√	√	√	√			√	√		√	√	√
A.I.R. Ambience Level		72	0	127		√									√		√			
Pitch Shift On/Off	RCV: 0-63=Disable, 64-127=Enable.TX: 0=disable, 127=enable	72	0	127									√	√						

Line 6 Hardware MIDI CC Reference Table																					
Parameter	Notes	MIDI CC # and Range			POD 2.0		PODxT		Bass PODxT		Flex III HD147		Vetta II		Floor POD Plus		Pocket POD		POD X3 Live /Pro		
		CC#	Min	Max	TX	RX	TX	RX	TX	RX	TX	RX	TX	RX	TX	RX	TX	RX	TX	RX	
Double Tracker On/Off		73	0	127									√	√							
Bright Switch	0~63=Off ; 64~127=On	73	0	127											√		√				
Stomp Pre/Post	0~63 = Pre-Amp Model, 64~127 = Post-Amp Model	74	0	127																	
Stomp Model	Range depends on device (see model tables)	75	0	-			√	√	√	√									√	√	
Room Level		76	0	127			√	√	√	√									√	√	
EQ Freq 4 (high shelving)	Non-linear mapping	77	0	127			√	√											√	√	
EQ Freq 6 (high shelving)	Non-linear mapping	77	0	127					√	√											
Stomp Param 1 Note Value	1=Whole, 2=Dotted Half, 3=Half, 4=Half Triplet, 5=Dotted Quarter, 6=Quarter, 7=Quarter Triplet, 8=Dotted Eighth, 9=Eighth, 10=Eighth Triplet, 11=Dotted Sixteenth, 12=Sixteenth, 13=Sixteenth Triplet	78	0	127																√	√
Stomp Param 2		79	0	127			√	√	√	√									√	√	
Stomp Param 3		80	0	127			√	√	√	√									√	√	
Stomp Param 4		81	0	127			√	√	√	√									√	√	
Stomp Param 5		82	0	127			√	√	√	√									√	√	
Stomp Param 6		83	0	127			√	√	√	√									√	√	
Amp Switch Select	0~63=Amp switch will turn Amp on/off ; 64~127=Amp switch will turn Comp on/off	84	0	127				Live	Live	Live	Live								√	√	

Line 6 Hardware MIDI CC Reference Table																				
Parameter	Notes	MIDI CC # and Range			POD 2.0		PODXT		Bass PODXT		Flex III HD147		Vetta II		Floor POD Plus		Pocket POD		POD X3 Live /Pro	
		CC#	Min	Max	TX	RX	TX	RX	TX	RX	TX	RX	TX	RX	TX	RX	TX	RX	TX	RX
Delay Param 4		85	0	127			√	√	√	√		√							√	√
Delay Param 5		86	0	127															v	√
Delay Pre/Post	0~63 = Pre-Amp Model, 64~127 = Post-Amp Model	87	0	127	√	√	√	√	√	√		√							√	√
Delay Model	Range depends on device (see model tables)	88	0	-	√	√	√	√			√	√			√	√			√	√
Delay/Verb Model	Range depends on device (see model tables)	88	0	-					√	√										
Tempo MSB		89	0	127			√	√	√	√	√	√							√	√
Tempo LSB		90	0	127			√	√	√	√	√	√							√	√
Amp 2 Model	Range depends on device (see model tables)	91	0	63										√	√					
Amp 2 Drive		92	0	127										√	√					
Mic Pre Amp Param 6		92	0	127																
Amp 2 Bass		93	0	127										√	√					
Mic Pre Amp Param 7		93	0	127																
Amp 2 Mid		94	0	127										√	√					
Mic Pre Amp Param 8		94	0	127																
Amp 2 Treble		95	0	127										√	√					
Mic Pre Amp Param 9		95	0	127																
Amp 2 Presence		102	0	127										√	√					
Mic Pre Amp Param 10		102	0	127																
Amp 2 Chan Volume		103	0	127										√	√					

Line 6 Hardware MIDI CC Reference Table																				
Parameter	Notes	MIDI CC # and Range			POD 2.0		PODXT		Bass PODXT		Flex III HD147		Vetta II		Floor POD Plus		Pocket POD		POD X3 Live /Pro	
		CC#	Min	Max	TX	RX	TX	RX	TX	RX	TX	RX	TX	RX	TX	RX	TX	RX	TX	RX
Mic Pre Amp Param 11		103	0	127																
FX Loop Send Level		104	0	127															√	√
Amp 2 Cabinet Type	Range depends on device (see model tables)	104	0	-																
Amp Bypass Channel Volume		105	0	127			√	√	√	√									√	√
FX Loop Return Level		106	0	127															√	√
Amp 2 Reverb Send Level		106	0	127																
FX Loop Enable	0~63=Off ; 64~127=On	107	0	127			Pro	Pro	Pro	Pro	√	√	√	√					√	√
FX Loop Pre/Post Toggle		108	0	127															√	√
Tweak Parameter Destination		108	0	13			√	√	√	√										
FX Loop Mix		109	0	127															√	√
Stomp Box 2 Enable		109	0	127									√	√						
Live Out Pan		110	0	127															√	√
Stomp Box 3 Enable		110	0	127									√	√						
Amp 1 Engage	0~63=Off ; 64~127=On	111	0	127			√	√	√	√			√	√	√	√			√	√
Amp 2 Engage	0~63=Off ; 64~127=On	112	0	127									√	√						

Line 6 Hardware MIDI CC Reference Table																				
Parameter	Notes	MIDI CC # and Range			POD 2.0		POD _{XT}		Bass POD _{XT}		Flex III HD147		Vetta II		Floor POD Plus		Pocket POD		POD X3 Live /Pro	
		CC#	Min	Max	TX	RX	TX	RX	TX	RX	TX	RX	TX	RX	TX	RX	TX	RX	TX	RX
Pitch/Tremolo (Vetta II)		113	0	127									√	√						
EQ Gain 1 (low shelving)		114	0	127			√	√	√	√									√	√
EQ Gain 2 (peaking)		115	0	127					√	√										
EQ Gain 2 (peaking)		116	0	127			√	√											√	√
EQ Gain 3 (peaking)		116	0	127					√	√										
EQ Gain 3 (peaking)		117	0	127			√	√											√	√
EQ Gain 4 (peaking)		117	0	127					√	√										
EQ Gain 5 (peaking)		118	0	127					√	√										
EQ Gain 4 (high shelving)		119	0	127			√	√											√	√
EQ Gain 6 (high shelving)		119	0	127					√	√										

GearBox Software MIDI CC Reference Table

The following table is for Line 6 GearBox 3.5 (and later). Use the following MIDI CC values to configure your external MIDI controller device assignments. If you are using an FBV MkII device, these MIDI CC values can be entered into the Line 6 FBV Control application to configure your FBV MkII device's controls for controlling GearBox. See the [FBV MkII Online Help](#) documentation for details.

GearBox Software MIDI CC Reference Table						
Parameter	Notes	MIDI CC# and Range			TX	RX
		CC#	Min	Max		
Not used		0	0	127		
Effect Tweak	Controls a GearBox parameter depending on current CC 108 setting.	1	0	127	√	√
Not used		2	0	127		
Not used		3	0	127		
Wah Level		4	0	127	√	√
Compressor Gain		5	0	127	√	√
Not used		6	0	3		
Volume Pedal Level		7	0	127	√	√
Not used		8	0	127		
Compressor Threshold		9	0	63	√	√
GearBox Output Pan	0=Full Left, 64=Center, 127=Full Right. Controls pan at the DSP output, before the monitor and record send paths	10	0	127	√	√
Amp Model Select	Performs same action as CC 12, but C 11 does not transmit.	11	0	106		√
Amp Model Select	See GearBox Model Tables pages	12	0	106	√	√
Amp Param 1		13	0	127	√	√
Amp Param 2		14	0	127	√	√
Amp Param 3		15	0	127	√	√
Amp Param 4		16	0	127	√	√
Amp Param 6		17	0	127	√	√
Reverb Mix		18	0	127	√	√
Not used		19	0	127		
EQ Frequency 1	Non-linear mapping	20	0	127	√	√
Amp Param 5		21	0	127	√	√
Noise Gate Enable	0~63=Off ; 64~127=On	22	0	127	√	√
Noise Gate Threshold	0<>31=-96dB, 32=-96dB...127=0dB	23	32	127	√	√
Noise Gate Decay	0=.1msec; 127=3000msec	24	0	127	√	√

GearBox Software MIDI CC Reference Table						
Parameter	Notes	MIDI CC# and Range			TX	RX
		CC#	Min	Max		
Stomp Enable	0~63=Off ; 64~127=On	25	0	127	√	√
Compressor Enable	0~63=Off ; 64~127=On	26	0	127	√	√
Stomp Param 1	MSB of 14-bit value (transmitted first)	27	0	127	√	√
Delay Enable	0~63=Off ; 64~127=On	28	0	127	√	√
Mod Param 1	MSB of 14-bit value (transmitted first)	29	0	127	√	√
Delay Param 1	MSB of 14-bit value (transmitted first)	30	0	127	√	√
Delay Note (for tempo sync)	1=Whole, 2=Dotted Half, 3=Half, 4=Half Triplet, 5=Dotted Quarter, 6=Quarter, 7=Quarter Triplet, 8=Dotted Eighth, 9=Eighth, 10=Eighth Triplet, 11=Dotted Sixteenth, 12=Sixteenth, 13=Sixteenth Triplet	31	0	127	√	√
Not used		32	0	127		
Delay Param 2		33	0	127	√	√
Delay Mix		34	0	127	√	√
Delay Param 3		35	0	127	√	√
Reverb Enable	0~63=Off ; 64~127=On	36	0	127	√	√
Reverb Model Select	See GearBox Model Tables pages	37	0	14	√	√
Reverb Decay		38	0	127	√	√
Reverb Tone		39	0	127	√	√
Reverb PreDelay		40	0	127	√	√
Reverb Pre/Post	0~63 = Pre-Amp Model, 64~127 = Post-Amp Model	41	0	127	√	√
EQ Frequency 2	Non-linear mapping	42	0	127	√	√
Wah Enable	0~63=Off ; 64~127=On	43	0	127	√	√
Not used		44	0	127		
Bass Amp DI Lo Cut		45	0	127	√	√
Volume Pedal Min Position		46	0	127	√	√
Volume Pre/Post	0~63 = Pre-Amp Model, 64~127 = Post-Amp Model	47	0	127	√	√
Bass Amp DI Level		48	0	127	√	√
Bass Amp DI Delay		49	0	127	√	√
Modulation Enable	0~63=Off ; 64~127=On	50	0	127	√	√
Modulation Note (for tempo sync)	1=Whole, 2=Dotted Half, 3=Half, 4=Half Triplet, 5=Dotted Quarter, 6=Quarter, 7=Quarter Triplet, 8=Dotted Eighth, 9=Eighth, 10=Eighth Triplet, 11=Dotted Sixteenth, 12=Sixteenth, 13=Sixteenth Triplet	51	0	13	√	√

GearBox Software MIDI CC Reference Table						
Parameter	Notes	MIDI CC# and Range			TX	RX
		CC#	Min	Max		
Modulation Param 2		52	0	127	✓	✓
Modulation Param 3		53	0	127	✓	✓
Modulation Param 4		54	0	127	✓	✓
Modulation Param 5		55	0	127		
Modulation Mix		56	0	127	✓	✓
Modulation Pre/Post	0~63 = Pre-Amp Model, 64~127 = Post-Amp Model	57	0	127	✓	✓
Modulation Model Select	See GearBox Model Tables pages	58	0	23	✓	✓
Stomp Param 1 (Dbl Prec)	LSB of 14-bit value (transmitted second)	59	0	127		
EQ Frequency 3	Non-linear mapping	60	0	127	✓	✓
Modulation Param 1 (Dbl Prec)	LSB of 14-bit value (transmitted second)	61	0	127	✓	✓
Delay Time Param 1 (Dbl Prec)	LSB of 14-bit value (transmitted second)	62	0	127	✓	✓
EQ Enable	0~63=Off ; 64~127	63	0	127	✓	✓
Tap Tempo Trigger	64-127 = a Tap	64	0	127	✓	✓
Not used		65	0	127		
Amp Model Bank Select	The setting of this control determines how CC 12 messages (Amp Model Select) will be interpreted. 0=load model from Guitar Amp Model set; 1=load model from Bass Amp Model set; 2=Preamps	66	0	2	✓	✓
Cab Model Bank Select	The setting of this control determines how CC 71 messages (Cab Model Select) will be interpreted. 0=load model from Guitar Cab Model set; 1=load model from Bass Cab Model set, 2=Preamps	67	0	1	✓	✓
Not used		68	0	127		
Tuner Enable	0~63=Off ; 64~127=On	69	0	127	✓	✓
Cabinet Mic Model (guitar)	See GearBox Model Tables pages	70	0	3	✓	✓
Cabinet Model Select (bass)	See GearBox Model Tables pages	71	0	3	✓	✓
Not used		72	0	127		
Not used		73	0	127	✓	✓
Stomp Pre/Post	0~63 = Pre-Amp Model, 64~127 = Post-Amp Model	74	0	127	✓	✓

GearBox Software MIDI CC Reference Table						
Parameter	Notes	MIDI CC# and Range			TX	RX
		CC#	Min	Max		
Stomp Model Select	See GearBox Model Tables pages	75	0	127	√	√
Cabinet Early Reflections		76	0	127	√	√
EQ Frequency 4	Non-linear mapping	77	0	127	√	√
Not used		78	0	127		
Stomp Param 2		79	0	127	√	√
Stomp Param 3		80	0	127	√	√
Stomp Param 4		81	0	127	√	√
Stomp Param 5		82	0	127	√	√
Stomp Param 6		83	0	127	√	√
Amp Switch Assign	0~63=Amp switch will turn Amp on/off ; 64~127=Amp switch will turn Comp on/off. Assign CC 111 to either Amp or Comp (enable/disable)	84	0	127	√	√
Delay Param 4		85	0	127	√	√
Delay Param 5		86	0	127	√	√
Delay Pre/Post	0~63 = Pre-Amp Model, 64~127 = Post-Amp Model	87	0	127	√	√
Delay Model Select	See GearBox Model Tables pages	88	0	13	√	√
Tempo	MSB of 14-bit value (transmitted first)	89	0	127	√	√
Tempo (Dbl Prec)	LSB of 14-bit value (transmitted second)	90	0	127	√	√
Wah Model Select	0=Vetta, 1=Fassel, 2=Weeper, 3=Chrome, 4=Chome Custom, 5=Throaty, 6=Conductor, 7=Colorful	91	0	7	√	√
Amp Param 7		92	0	127	√	√
Amp Param 8		93	0	127	√	√
Amp Param 9		94	0	127	√	√
Amp Param 10		95	0	127	√	√
Not Applicable		96	----	----		
Not Applicable		97	----	----		
Not Applicable		98	----	----		
Not Applicable		99	----	----		
Not Applicable		100	----	----		
Not Applicable		101	----	----		
Amp Param 11		102	0	127	√	√
Amp Param 12		103	0	127	√	√

GearBox Software MIDI CC Reference Table						
Parameter	Notes	MIDI CC# and Range			TX	RX
		CC#	Min	Max		
Not used		104	0	127		
Amp Bypass Volume		105	0	127	√	√
Not used		106	0	127		
Not used		107	0	127		
Tweak Assignment	Assign CC 1 to control a GearBox parameter	108	0	13	√	√
Not used		109	0	127		
Not used		110	0	127		
Amp State	0~63=Off ; 64~127=On. Toggles between Amp or Compressor (depending on CC 84 parameter)	111	0	127	√	√
Not used		112	0	127		
Not used		113	0	127		
EQ Gain 1		114	0	127	√	√
Not used		115	0	127		
EQ Gain 2		116	0	127	√	√
EQ Gain 3		117	0	127	√	√
Not used		118	0	127		
EQ Gain 4		119	0	127	√	√
Not Applicable		120				
Not Applicable		121				
Not Applicable		122				
Not Applicable		123				
Not Applicable		124				
Not Applicable		125				
Not Applicable		126				
Not Applicable		127				

MIDI CC RANGE REFERENCE - MODEL TABLES

The following Model Tables provide the detailed breakdown of MIDI CC range values that are assigned to the individual Amp, Cabinet and Effects' "Model Select" parameters. Each Amp/Cab/Effect Model type is recalled using the specific range value for the assigned MIDI CC. Use these MIDI CC values to configure your MIDI controller device assignments to control the parameters for your Line 6 gear.

Pocket POD Model Tables

Amp Models (MIDI CC 12)	
Value	Model Name
0	Tube Preamp
1	Line 6 Clean
2	Line 6 Crunch
3	Line 6 Drive
4	Line 6 Layer
5	Small Tweed
6	Tweed Blues
7	Black Panel
8	Modern Class A
9	Brit Class A
10	Brit Blues
11	Brit Classic
12	Brit Hi Gain
13	Treadplate
14	Modern Hi Gain
15	Fuzz Box
16	Jazz Clean
17	Boutique #1
18	Boutique #2
19	Brit Class A #2
20	Brit Class A #3
21	Small Tweed #2
22	Black Panel #2
23	Boutique #3
24	California Crunch #1
25	California Crunch #2
26	Treadplate #2

Amp Models (MIDI CC 12)	
Value	Model Name
27	Modern Hi Gain #2
28	Line 6 Twang
29	Line 6 Crunch #2
30	Line 6 Blues
31	Line 6 INSANE

Cab Models (MIDI CC 71)	
Value	Model Name
0	1x 8 '60 Fender Tweed Champ
1	1x12 '52 Fender Tweed Deluxe
2	1x12 '60 Vox AC15
3	1x12 '64 Fender Blackface Deluxe
4	1x12 '98 Line 6 Flextone
5	2x12 '65 Fender Blackface Twin
6	2x12 '67 VOX AC30
7	2x12 '95 Matchless Chieftain
8	2x12 '98 Pod custom 2x12
9	4x10 '59 Fender Bassman
10	4x10 '98 Pod custom 4x10 cab
11	4x12 '96 Marshall with V30s
12	4x12 '78 Marshall with 70s
13	4x12 '97 Marshall Basketweave with Greenbacks
14	4x12 '98 Pod custom 4x12
15	No Cabinet

Pocket POD Model Tables - continued

Effects Models (MIDI CC 19)	
Value	Model Name
0	Chorus2
1	Flanger1
2	Rotary
3	Flanger2
4	Delay/Chorus1
5	Delay/Tremolo
6	Delay
7	Delay/Comp
8	Chorus1
9	Tremolo
10	Bypass
11	Compressor
12	Delay/Chorus2
13	Delay/Flanger1
14	Delay/Swell
15	Delay/Flanger2

Floor POD Model Tables

Amp Models (MIDI CC 12)	
Value	Model Name
0	Tube Preamp
1	Line 6 Clean
2	Line 6 Crunch
3	Line 6 Drive
4	Line 6 Layer
5	Smal Tweed
6	Tweed Blues
7	Black Panel
8	Modern Class A
9	Brit Class A
10	Brit Blues
11	Brit Classic
12	Brit Hi Gain
13	TreadPlate
14	Modern Hi Gain
15	Fuzz Box
16	Jazz Clean
17	Boutique #1
18	Boutique #2
19	Brit Class A #2
20	Brit Class A #3
21	Small Tweed #2
22	Black Panel #2
23	Boutique #3
24	California Crunch #1
25	California Crunch #2
26	TreadPlate #2
27	Modern Hi Gain #2
28	Line 6 Twang
29	Line 6 Crunch #2
30	Line 6 Blues
31	Line 6 Insane

Cab Models (MIDI CC 71)	
Value	Model Name
0	1x 8 '60 Fender Tweed Champ
1	1x12 '52 Fender Tweed Deluxe
2	1x12 '60 Vox AC15
3	1x12 '64 Fender Blackface Deluxe
4	1x12 '98 Line 6 Flextone
5	2x12 '65 Fender Blackface Twin
6	2x12 '67 VOX AC30
7	2x12 '95 Matchless Chieftain
8	2x12 '98 POD custom 2x12
9	4x10 '59 Fender Bassman
10	4x10 '98 POD custom 4x10 cab
11	4x12 '96 Marshall with V30s
12	4x12 '78 Marshall with 70s
13	4x12 '97 Marshall off axis
14	4x12 '98 POD custom 4x12
15	No Cabinet

Reverb Type (MIDI CC 37)	
Value	Model Name
0-63	Spring
64-127	Hall

Delay Type (MIDI CC 88)	
Value	Model Name
0	Tape
1	Multi-Tap
2	Digital
3	Reverse
4	Sweep Echo
5	Analog

Floor POD Model Tables - continued

Effects Models (MIDI CC 19)	
Value	Model Name
0	Tremolo
1	Chorus 1
2	Chorus 2
3	Flange 1
4	Flange 2
5	Rotary
6	Phaser
7	U-Vibe
8	Obi-Wah
9	Tron-Up
10	Octave Fuzz
11	Sub Octave
12	Comet Trails
13	Ring Modulator
14	Otto Phase
15	Swell

Compression Ratio (MIDI CC 42)	
Value	Ratio
0-21	Off
22-42	1.4:1
43-64	2:1
65-85	3:1
86-107	6:1
108-127	infinity:1

POD 2.0 Model Tables

Amp Models (MIDI CC 11/12)	
Value	Model Name
0	Tube Preamp
1	POD Clean Line 6
2	POD Crunch Line 6
3	POD Drive Line 6
4	POD Layer Line 6
5	Small Tweed
6	Tweed Blues
7	Black Panel
8	Modern Class A
9	Brit Class A
10	Brit Blues
11	Brit Classic
12	Brit Hi Gain
13	Rectified '94
14	Modern Hi Gain
15	Fuzz Box
16	Jazz Clean
17	Boutique #1
18	Boutique #2
19	Brit Class A #2
20	Brit Class A #3
21	Small Tweed #2
22	Black Panel #2
23	Boutique #3
24	California Crunch #1
25	California Crunch #2
26	Rectified #2
27	Modern Hi Gain #2
28	Line 6 Twang
29	Line 6 Crunch #2
30	Line 6 Blues
31	Line 6 Insane

Cab Models (MIDI CC 71)	
Value	Model Name
0	1x 8 '60 Fender Tweed Champ
1	1x12 '52 Fender Tweed Deluxe
2	1x12 '60 Vox AC15
3	1x12 '64 Fender Blackface Deluxe
4	1x12 '98 Line 6 Flextone
5	2x12 '65 Fender Blackface Twin
6	2x12 '67 VOX AC30
7	2x12 '95 Matchless Chieftain
8	2x12 '98 Pod custom 2x12
9	4x10 '59 Fender Bassman
10	4x10 '98 Pod custom 4x10 cab
11	4x12 '96 Marshall with V30s
12	4x12 '78 Marshall with 70s
13	4x12 '97 Marshall off axis
14	4x12 '98 Pod custom 4x12
15	No Cabinet

POD 2.0 Model Tables - continued

Effects Models (MIDI CC 19)	
Value	Model Name
0	Chorus2
1	Flanger1
2	Rotary
3	Flanger2
4	Delay/Chorus1
5	Delay/Tremolo
6	Delay
7	Delay/Comp
8	Chorus1
9	Tremolo
10	Bypass
11	Compressor
12	Delay/Chorus2
13	Delay/Flanger1
14	Delay/Swell
15	Delay/Flanger2

PODxT Model Tables

Model Packs: PP=Power Pack, MS=Metal Shop, CC=Collector Classics, FX=FX Junkie, BX=Bass Expansion

Amp Models (MIDI CC 11/12)			Amp Models (MIDI CC 11/12)			Amp Models (MIDI CC 11/12)		
Value	Pack	Model Name	Value	Pack	Model Name	Value	Pack	Model Name
0		Bypass	28		Jazz Clean	56	CC	Deity Crunch
1		Tube Preamp	29		Solo 100	57	CC	Blackface Vibro
2	PP	Line 6 Clean	30	PP	Super O	58	CC	Double Show
3	PP	Line 6 JTS-45	31	PP	Class A-15	59	CC	Silverface Bass
4	PP	Line 6 Class A	32		Class A-30 TB	60	CC	Mini Double
5	PP	Line 6 Mood	33	PP	Line 6 Agro	61	CC	Gibtone Expo
6		Line 6 Spinal Puppet	34	PP	Line 6 Lunatic	62	CC	Brit Bass
7		Line 6 Chemical X	35		Line 6 Treadplate	63	CC	Brit Major
8		Line 6 Insane	36	PP	Line 6 Variax Acoustic	64	CC	Silver Twelve
9		Line 6 Acoustic 2	37	MS	Bomber Uber	65	CC	Super O Thunder
10	PP	Zen Master	38	MS	Connor 50	66	CC	Line 6 Bayou
11		Small Tweed	39	MS	Deity Lead	67	CC	Line 6 Crunch
12		Tweed B-Man	40	MS	Deity's Son	68	CC	Line 6 Purge
13	PP	Tiny Tweed	41	MS	Angel P-Ball	69	CC	Line 6 Sparkle
14		Blackface Lux	42	MS	Silver J	70	CC	Line 6 Super Clean
15	PP	Double Verb	43	MS	Brit J-900 Clean	71	CC	Line 6 Super Sparkle
16	PP	Two-Tone	44	MS	Brit J-900 Dist	72	CC	Line 6 Twang
17	PP	Hiway 100	45	MS	Brit J-2000	73	BX	Tube Preamp
18	PP	Plexi 45	46	MS	Diamondplate	74	BX	L6 Classic Jazz
19		Plexi Lead 100	47	MS	Criminal	75	BX	L6 Brit Invader
20		Plexi Jump Lead	48	MS	Line 6 Big Bottom	76	BX	L6 Super Thor
21	PP	Plexi Variac	49	MS	Line 6 Chunk-Chunk	77	BX	L6 Frankenstein
22		Brit J-800	50	MS	Line 6 Fuzz	78	BX	L6 Ebony Lux
23	PP	Brit JM Pre	51	MS	Line 6 Octone	79	BX	L6 Doppelganger
24	PP	Match Chief	52	MS	Line 6 Smash	80	BX	L6 Sub Dub
25	PP	Match D-30	53	MS	Line 6 Sparkle Clean	81	BX	Amp 360
26		Treadplate Dual	54	MS	Line 6 Throttle	82	BX	Jaguar
27	PP	Cali Crunch	55	CC	Bomber XTC	83	BX	Alchemist

PODxt Model Tables - continued

Model Packs: PP=Power Pack, MS=Metal Shop, CC=Collector Classics, FX=FX Junkie, BX=Bass Expansion

Amp Models (MIDI CC 11/12)			Cab Models (MIDI CC 71)		
Value	Pack	Model Name	Value	Pack	Model Name
84	BX	Rock Classic	0		No Cabinet
85	BX	Flip Top	1		1x6 Super O
86	BX	Adam and Eve	2		1x8 Tweed
87	BX	Tweed B-Man	3		1x10 Gibtone
88	BX	Silverface Bass	4		1x10 G-Brand
89	BX	Double Show	5		1x12 Line 6
90	BX	Eighties	6		1x12 Tweed
91	BX	Hiway 100	7		1x12 Blackface
92	BX	Hiway 200	8		1x12 Class A
93	BX	British Major	9		2x2 Mini T
94	BX	British Bass	10		2x12 Line 6
95	BX	California	11		2x12 Blackface
96	BX	Jazz Tone	12		2x12 Match
97	BX	Stadium	13		2x12 Jazz
98	BX	Studio Tone	14		2x12 Class A
99	BX	Motor City	15		4x10 Line 6
100	BX	Brit Class A100	16		4x10 Tweed
101		Citrus D-30	17		4x12 Line 6
102		L6 Mod Hi Gain	18		4x12 Green 20's
103		L6 Boutique #1	19		4x12 Green 25's
104		Class A-30 Fawn	20		4x12 Brit T75
105		Brit Gain 18	21		4x12 Brit V30's
106		Brit J-2000 #2	22		4x12 Treadplate

PODxt Model Tables - continued

Model Packs: PP=Power Pack, MS=Metal Shop, CC=Collector Classics, FX=FX Junkie, BX=Bass Expansion								
Stomp Models (MIDI CC 75)			Stomp Models (MIDI CC 75)			Mod Models (MIDI CC 58)		
Value	Pack	Model Name	Value	Pack	Model Name	Value	Pack	Model Name
0		Facial Fuzz	27		Bass Overdrive	0		Sine Chorus
1		Fuzz Pi	28		Bronze Master	1	PP	Analog Chorus
2		Screamer	29		Sub Octaves	2		Line 6 Flanger
3		Classic Dist	30		Bender	3	PP	Jet Flanger
4	PP	Octave Fuzz				4		Phaser
5	PP	Blue Comp				5		U-Vibe
6	PP	Red Comp				6		Opto Trem
7		Vetta Comp				7	PP	Bias Trem
8	PP	Auto Swell				8		Rotary Drum + Horn
9	PP	Auto Wah				9	PP	Rotary Drum
10	FX	Killer Z				10	PP	Auto Pan
11	FX	Tube Drive				11	FX	Analog Square
12	FX	Vetta Juice				12	FX	Square Chorus
13	FX	Line 6 Boost + EQ				13	FX	Expo Chorus
14	FX	Blue Comp Treb				14	FX	Random Chorus
15	FX	Dingo-Tron				15	FX	Square Flange
16	FX	Clean Sweep				16	FX	Expo Flange
17	FX	Seismik Synth				17	FX	Lumpy Phase
18	FX	Double Bass				18	FX	Hi-Talk
19	FX	Buzz Wave				19	FX	Line 6 Sweeper
20	FX	Rez Synth				20	FX	POD Purple X
21	FX	Saturn 5 Ring Mod				21	FX	Random S&H
22	FX	Synth Analog				22	FX	Tape Eater
23	FX	Synth FX				23	FX	Warble-Matic
24	FX	Synth Harmony						
25	FX	Synth Lead						
26	FX	Synth String						

PODXT Model Tables - continued

Model Packs: PP=Power Pack, MS=Metal Shop, CC=Collector Classics, FX=FX Junkie, BX=Bass Expansion								
Delay Models (MIDI CC 88)			Reverb Models (MIDI CC 37)			Wah Models (MIDI CC 91)		
Value	Pack	Model Name	Value	Pack	Model Name	Value	Pack	Model Name
0	PP	Analog	0	PP	Lux Spring	0		Vetta Wah
1		Analog w/Mod	1		Std Spring	1	PP	Jen Fassel
2		Tube Echo	2	PP	King Spring	2		Weeper
3	PP	Multi-Head	3	PP	Small Room	3	PP	Chrome
4	PP	Sweep Echo	4	PP	Tiled Room	4	PP	Chrome Custom
5		Digital Delay	5		Brite Room	5	PP	Throaty
6	PP	Stereo Delay	6	PP	Dark Hall	6	PP	Conductor
7	PP	Ping-Pong	7		Medium Hall	7	PP	Colorful
8	PP	Reverse	8	PP	Large Hall			
9	FX	Echo Platter	9	PP	Rich Chamber			
10	FX	Tape Echo	10	PP	Chamber			
11	FX	Low Rez	11		Cavernous			
12	FX	Phase Eko	12		Slap Plate			
13	FX	Bubble Echo	13	PP	Vintage Plate			
			14	PP	Large Plate			

Bass PODxT Model Tables

Amp Models (MIDI CC 11/12)	
Value	Model Name
0	Bypass
1	Tube Preamp
2	Line 6 Classic Jazz
3	Line 6 Brit Invader
4	Line 6 Super Thor
5	Line 6 Frankenstein
6	Line 6 Ebony Lux
7	Line 6 Doppleganger
8	Line 6 Sub Dub
9	Amp 360
10	Jaguar
11	Alchemist
12	Rock Classic
13	Flip Top
14	Adam and Eve
15	Tweed B-Man
16	Silverface Bass
17	Double Show
18	Eighties
19	Hiway 100
20	Hiway 200
21	British Major
22	British Bass
23	California
24	Jazz Tone
25	Stadium
26	Studio Tone
27	Motor City
28	Brit Class A100

Cab Models (MIDI CC 71)	
Value	Model Name
0	No Cabinet
1	1x12 Boutique
2	1x12 Motor City
3	1x15 Flip Top
4	1x15 Jazz Tone
5	1x18 Session
6	1x18 Amp 360
7	1x18 California
8	1x18+12 Stadium
9	2x10 Modern UK
10	2x15 Double Show
11	2x15 California
12	2x15 Class A
13	4x10 Line 6
14	4x10 Tweed
15	4x10 Adam Eve
16	4x10 Silvercone
17	4x10 Session
18	4x12 Hiway
19	4x12 Green 20's
20	4x12 Green 25's
21	4x15 Big Boy
22	8x10 Classic

Stomp Models (MIDI CC 75)	
Value	Model Name
0	Bass Overdrive
1	Screamer
2	Classic Dist
3	Facial Fuzz
4	Fuzz Pi
5	Octave
6	Bronze Master
7	Blue Comp
8	Red Comp
9	Vetta Comp
10	Auto Wah
11	Dingo-Tron
12	Buzz Wave
13	Seismik Synth
14	Rez Synth
15	Saturn 5 Ring Mod
16	Synth Analog
17	Synth FX
18	Synth Harmony
19	Synth Lead
20	Synth String
21	Double Bass

Bass PODxT Model Tables - continued

Mod Models (MIDI CC 58)	
Value	Model Name
0	Deluxe Chorus
1	Analog Chorus
2	Deluxe Flange
3	Jet Flanger
4	Phaser
5	U-Vibe
6	Opto Trem
7	Bias Trem
8	Rotary Drum
9	Rotary Drum + Horn
10	Line 6 Rotor
11	Random S&H
12	Tape Eater

Delay/Reverb Models (MIDI CC 88)	
Value	Model Name
0	Analog
1	Analog w/Mod
2	Tube Echo
3	Multi-Head
4	Sweep Echo
5	Digital Delay
6	Reverse Delay
7	Lux Spring
8	Std Spring
9	King Spring
10	Small Room
11	Tiled Room
12	Brite Room
13	Dark Hall
14	Medium Hall
15	Large Hall
16	Rich Chamber
17	Chamber
18	Cavernous
19	Slap Plate
20	Vintage Plate
21	Large Plate

POD X3 Model Tables

Guitar Amp Models (MIDI CC 11)	
Value	Model Name
0	Line 6 Agro
1	Line 6 Bayou
2	Line 6 Big Bottom
3	Line 6 Boutique #1
4	Line 6 Chemical X
5	Line 6 Chunk Chunk
6	Line 6 Class A
7	Line 6 Clean
8	Line 6 Crunch
9	Line 6 Fuzz
10	Line 6 Insane
11	Line 6 JTS-45
12	Line 6 Lunatic
13	Line 6 Modern Hi Gain
14	Line 6 Mood
15	Line 6 Octone
16	Line 6 Piezacooustic 2
17	Line 6 Purge
18	Line 6 Smash
19	Line 6 Sparkle
20	Line 6 Sparkle Clean
21	Line 6 Spinal Puppet
22	Line 6 Super Clean
23	Line 6 Super Sparkle
24	Line 6 Throttle
25	Line 6 Treadplate
26	Line 6 Tube Preamp
27	Line 6 Twang

Guitar Amp Models (MIDI CC 11)	
Value	Model Name
28	Line 6 Variax Acoustic
29	2002 Angel P-Ball
30	1964 Blackface 'Lux
31	1963 Blackface Vibro
32	2002 Bomber Uber
33	2002 Bomber X-TC
34	1968 Brit Plexi Bass 100
35	Brit Gain 18
36	2003 Brit Gain J-2000
37	Brit J-2000 #2
38	1990 Brit J-800
39	1992 Brit J900 Clean
40	1992 Brit J900 Dist
41	1996 Brit JM Pre
42	1969 Brit Plexi Lead 200
43	1987 Brit Gain Slvr J
44	1985 Cali Crunch
45	Citrus D-30
46	1960 Class A-15
47	Class A-30 Fawn
48	1967 Class A30 Top Boost
49	2003 Connor 50
50	2002 Criminal
51	2003 Deity Crunch
52	2003 Deity Lead
53	2003 Deity's Son
54	2001 Diamond Plate
55	1967 Double Showman

Guitar Amp Models (MIDI CC 11)	
Value	Model Name
56	1965 Double Verb
57	1960 Gibtone Expo
58	1973 Hiway 100
59	1987 Jazz Clean
60	1996 Match Chief
61	1993 Match D-30
62	1996 Mini Double
63	1965 Plexi 45
64	1968 Plexi Jump Lead
65	1968 Plexi Lead 100
66	1968 Plexi Variac'd
67	1967 Silver Twelve
68	1972 Silverface Bass
69	1953 Small Tweed
70	1993 Solo 100 Head
71	1960's Super O
72	1962 Super O Thunder
73	1960 Tiny Tweed
74	2001 Treadplate Dual
75	1958 Tweed B-Man
76	1960 Two-Tone
77	2001 Zen Master
78	No Amp

POD X3 Model Tables - continued

Bass Amp Models (MIDI CC 11)	
Value	Model Name
79	Line 6 Brit Invader
80	Line 6 Classic Jazz
81	Line 6 Doppleganger
82	Line 6 Ebony Lux
83	Line 6 Frankenstein
84	Line 6 Sub Dub
85	Line 6 Super Thor
86	Line 6 Tube Preamp
87	1998 Adam and Eve
88	1975 Alchemist
89	1972 Amp 360
90	1968 Brit Bass
91	1965 Brit Class A 100
92	1969 British Major
93	2003 California
94	1964 Double Show
95	1989 Eighties
96	1968 Flip Top
97	1973 Hiway 100
98	1971 Hiway 200
99	2003 Jaguar
100	1998 Jazz Tone
101	1967 Motor City
102	1974 Rock Classic
103	1967 Silverface Bass
104	1978 Stadium
105	2002 Studio Tone
106	1958 Tweed B-Man

Guitar Cab Models (MIDI CC 71)	
Value	Model Name
0	1x6 60's Super O
1	1x8 '60 Tiny Tweed
2	1x10 '59 Gibtone
3	1x10 '60 G-Brand
4	1x12 '01 Line 6
5	1x12 '53 Small Tweed
6	1x12 '64 Blackface Lux
7	1x12 '60 Class A-15
8	2x2 '01 Mini T
9	2x12 '01 Line 6
10	2x12 '65 Blackface
11	2x12 '96 Match Chief
12	2x12 '87 Jazz Clean
13	2x12 '67 Class A-30
14	4x10 '01 Line 6
15	4x10 '58 Tweed B-Man
16	4x12 '01 Line 6
17	4x12 '67 Green 20's
18	4x12 '68 Green 25's
19	4x12 '78 Brit Celest T-75's
20	4x12 '98 Brit Celest V30
21	4x12 '01 Treadplate
22	4x12 '62 Thunder
23	2x12 '67 Wishbook
24	No Cabinet

Bass Cab Models (MIDI CC 71)	
Value	Model Name
25	Bass - 1x12 Boutique
26	Bass - 1x12 Motor City
27	Bass - 1x15 Flip Top
28	Bass - 1x15 Jazz Tone
29	Bass - 1x18 Session
30	Bass - 1x18 Amp 360
31	Bass - 1x18 California
32	Bass - 1x18+12
33	Bass - 2x10 Modern UK
34	Bass - 2x15 Doubleshow
35	Bass - 2x15 California
36	Bass - 2x15 Class A
37	Bass - 4x10 Line 6
38	Bass - 4x10 Tweed
39	Bass - 4x10 Adam and Eve
40	Bass - 4x10 Silvercone
42	Bass - 4x10 Session
42	Bass - 4x12 Hiway
43	Bass - 4x12 Green 20's
44	Bass - 4x12 Green 25's
45	Bass - 4x15 Big Boy
46	Bass - 8x10 Classic
47	No Cabinet

Preamp Models (MIDI CC 11)	
Value	Model Name
107	American Classic
108	Console
109	Lo-Fi
110	Modern
111	Vintage
112	Vintage UK

POD X3 Model Tables - continued

Stomp Models (MIDI CC 75)	
Value	Model Name
0	Facial Fuzz
1	Fuzz Pi
2	Screamer
3	Classic Distortion
4	Octave Fuzz
5	Killer Z
6	Tube Drive
7	Boost + EQ
8	Bass Overdrive
9	Bronze Master
10	Red Comp
11	Blue Comp
12	Blue Comp Treb
13	Vetta Comp
14	Vetta Juice
15	Auto Swell
16	Femal De-Esser
17	Male De-Esser
18	Auto Wah
19	Dingo Tron
20	Clean Sweep
21	Seismik Synth
22	Double Bass
23	Buzz Wave
24	Rez Synth
25	Saturn 5 Ring Mod
26	Synth Analog
27	Synth FX
28	Synth Harmony
29	Synth Lead
30	Synth String
31	Sub Octaves
32	Bender

Mod Models (MIDI CC 58)	
Value	Model Name
0	Sine Chorus
1	Analog Chorus
2	Line 6 Flanger
3	Jet Flanger
4	Phaser
5	U-Vibe
6	Opto Tremolo
7	Bias Tremolo
8	Rotary Drum + Horn
9	Rotary Drum
10	Auto Pan
11	Analog Square Chorus
12	Stereo Square Chorus
13	Stereo Expo Chorus
14	Random Chorus
15	Stereo Square Flange
16	Expo Flange
17	Lumpy Phase
18	Hi-Talk
19	Sweeper
20	POD Purple X
21	Random S&H
22	Tape Eater
23	Warble-Matic

Delay Models (MIDI CC 88)	
Value	Model Name
0	Analog Delay
1	Analog w/Modulation
2	Tube Echo
3	Multi-Head Delay
4	Sweep Echo
5	Digital Delay
6	Stereo Delay
7	Ping-Pong Delay
8	Reverse Delay
9	Echo Platter
10	Tape Echo
11	Low Rez Delay
12	Phaze Eko
13	Bubble Echo

POD X3 Model Tables - continued

Reverb Models (MIDI CC 37)	
Value	Model Name
0	Lux Spring
1	Standard Spring
2	King Spring
3	Small Room
4	Tiled Room
5	Brite Room
6	Dark Hall
7	Medium Hall
8	Large Hall
9	Rich Chamber
10	Chamber
11	Cavernous
12	Slap Plate
13	Vintage Plate
14	Large Plate

Wah Models (MIDI CC 44)	
Value	Model Name
0	Vetta Wah
1	Fassel
2	Weeper
3	Chrome
4	Chrome Custom
5	Throaty
6	Conductor
7	Colorful

Flexitone III Model Tables

Amp Models (MIDI CC 11/12)	
Value	Model Name
0	Line 6 Clean
1	Line 6 Crunch
2	Line 6 Mood
3	Line 6 Insane
4	Jazz Clean
5	Blackface Lux
6	Tweed B-Man
7	Double Verb
8	Match Chief
9	Class A-30 TB
10	Plexi 45
11	Plexi Lead 100
12	Brit J-800
13	Treadplate Dual
14	Solo 100
15	Gibtone Expo
16	Line 6 Super Clean
17	Line 6 Sparkle
18	Line 6 Chemical X
19	Line 6 Fuzz
20	Hiway 100
21	Small Tweed
22	Blackface Vibro
23	Zen Master
24	Connor 50
25	Class A-15
26	Brit Bass
27	Brit Silver
28	Brit J-2000

Amp Models (MIDI CC 11/12)	
Value	Model Name
29	Diamondplate
30	Bomber XTC
31	Super O

Cab Models (MIDI CC 71)	
Value	Model Name
0	No Cabinet
1	1x6 Super O
2	1x10 Gibtone
3	1x12 Tweed
4	1x12 Blackface
5	2x10 Vibro
6	2x12 Blackface
7	2x12 Match
8	2x12 Jazz
9	2x12 Class A
10	4x10 Tweed
11	4x12 Green 20's
12	4x12 Green 25's
13	4x12 Brit T75
14	4x12 Brit V30's
15	4x12 Treadplate

Flexitone III Model Tables - continued

Mod Models (MIDI CC 58)	
Value	Model Name
0	Tremolo
1	Chorus
2	Flanger
3	Phaser
4	U-Vibe
5	Rotary

Delay Models (MIDI CC 88)	
Value	Model Name
0	Tube Echo
1	Tape Echo
2	Analog
3	Digital
4	Ping Pong
5	Sweep Echo

Reverb Models (MIDI CC 37)	
Value	Model Name
0	Lux Spring
1	Std Spring
2	King Spring
3	Small Room
4	Tiled Room
5	Brite Room
6	Dark Hall
7	Medium Hall
8	Large Hall
9	Rich Chamber
10	Chamber
11	Cavernous
12	Slap Plate
13	Vintage Plate
14	Large Plate

HD 147 Model Tables

Amp Models (MIDI CC 11/12)	
Value	Model Name
0	Line 6 Clean
1	Line 6 Super Sparkle
2	Line 6 Crunch
3	Line 6 Insane
4	Line 6 Smash
5	Line 6 Octone
6	Line 6 Treadplate
7	Jazz Clean
8	Blackface Lux
9	Double Verb
10	Plexi Lead 100
11	Brit J-800
12	Connor 50
13	Treadplate Dual
14	Bomber Uber
15	Deity Lead
16	Line 6 Super Clean
17	Line 6 Mood
18	Line 6 Spinal Puppet
19	Line 6 Purge
20	Line 6 Big Bottom
21	Line 6 Agro
22	Criminal
23	Class A-30 TB
24	Tiny Tweed
25	Tweed B-Man
26	Plexi 45
27	Brit J-2000

Amp Models (MIDI CC 11/12)	
Value	Model Name
28	Brit Silver
29	Diamondplate
30	Bomber XTC
31	Deity's Son

Cab Models (MIDI CC 71)	
Value	Model Name
0	No Cabinet
1	1x6 Super O
2	1x10 Gibtone
3	1x12 Tweed
4	1x12 Blackface
5	2x10 Vibro
6	2x12 Blackface
7	2x12 Match
8	2x12 Jazz
9	2x12 Class A
10	4x10 Tweed
11	4x12 Green 20's
12	4x12 Green 25's
13	4x12 Brit T75
14	4x12 Brit V30's
15	4x12 Treadplate

HD 147 Model Tables - continued

Mod Models (MIDI CC 58)	
Value	Model Name
0	Tremolo
1	Chorus
2	Flanger
3	Phaser
4	U-Vibe
5	Rotary

Delay Models (MIDI CC 88)	
Value	Model Name
0	Tube Echo
1	Tape Echo
2	Analog
3	Digital
4	Ping Pong
5	Sweep Echo

Reverb Models (MIDI CC 37)	
Value	Model Name
0	Lux Spring
1	Std Spring
2	King Spring
3	Small Room
4	Tiled Room
5	Brite Room
6	Dark Hall
7	Medium Hall
8	Large Hall
9	Rich Chamber
10	Chamber
11	Cavernous
12	Slap Plate
13	Vintage Plate
14	Large Plate

Vetta II Model Tables

Amp Models (MIDI CC 12/91)		
Display #	CC Value	Model Name
1	49	Bypass (no amp)
2	45	Line 6 Tube Preamp
3	50	Line 6 Variax Acous
4	13	Line 6 Piezacoustic1
5	14	Line 6 Piezacoustic2
6	0	Line 6 Clean
7	51	Line 6 Super Clean
8	1	Line 6 Sparkle
9	52	Line 6 Super Sparkl
10	53	Line 6 Splarkle Clean
11	2	Line 6 Twang
12	3	Line 6 Bayou
13	5	Line 6 Class A
14	4	Line 6 JTS-45
15	6	Line 6 Mood
16	10	Line 6 Purge
17	54	Line 6 Crunch
18	8	Line 6 Throttle
19	9	Line 6 Chemical X
20	55	Line 6 Smash
21	7	Line 6 Spinal Puppet
22	56	Line 6 Fuzz
23	57	Line 6 Chunk Chunk
24	58	Line 6 Big Bottom
25	59	Line 6 Treadplate
26	60	Line 6 Lunatic
27	61	Line 6 Agro
28	11	Line 6 Insane

Amp Models (MIDI CC 12/91)		
Display #	CC Value	Model Name
29	12	Line 6 Octone
30	47	'02 Bomber X-TC
31	46	'02 Bomber Uber
32	15	'01Zen Master
33	62	'03 Connor 50
34	63	'03 Deity Crunch
35	64	'03 Deity Lead
36	65	'03 Deity's Son
37	48	'02 Angel P-Ball
38	16	'53 Fn Tweed Small Tweed
39	17	'58 Fn Tweed B-Man
40	18	'61 Fn Tweed Tiny Tweed
41	66	'63 Fn Black Vib Verb
42	19	'64 Fn Black Lux
43	20	'65 Fn Black Double
44	67	'67 Fn Black Dual Show
45	68	'72 Fn Silver Bass Head
46	21	'96 Fn Mini Double
47	22	'60 Gibtone Explorer
48	23	'60 G-Brand Two-Tone
49	24	'73 Hiway 100 Custom
50	25	'65 Brit Plexi Lead J-45
51	26	'68 Brit Plexi Lead 100
52	27	'68 Brit Plexi Bass 100
53	28	'68 Brit Plexi Jump Lead
54	29	'68 Brit Plexi Variac
55	30	'69 Brit Plexi Lead 200
56	31	'87 Brit Gain J-800

Vetta II Model Tables - continued

Amp Models (MIDI CC 12/91)		
Display #	CC Value	Model Name
57	69	'87 Brit Gain Silver J
58	32	'96 Brit Gain JM Pre
59	70	'92 Brit Gain J-900 Clean
60	71	'92 Brit Gain J-900 Dist
61	72	'03 Brit Gain J-2000
62	33	'96 Match Chief
63	34	'93 Match D-30
64	37	'85 California Crunch
65	35	'01 California Treadplate
66	36	'01 California Diamondplate
67	73	'02 Mississippi Criminal
68	38	'87 Jazz Clean 120
69	39	'67 Wishbook Silver 12
70	40	'93 Hi Gain Solo 100
71	41	'63 Super O Pawnshop
72	42	'62 Super O Thunder
73	43	'61 Class A C-15
74	44	'67 Class A C-30 TB
75	45	'05 Citrus D-30
76	46	L6 Modern Hi Gain
77	47	L6 Boutique #1
78	48	Class A C-30 Fawn
79	49	'05 Brit Gain Eighteen
80	50	'03 Brit Gain J-2000 #2

GearBox Software Model Tables

Model Pack Set Index	
	Power Pack (included with all PODxt devices)
	TonePort Free Set
	Metal Shop
	Collector Classics
	FX Junkie
	Bass Pack (includes all bass amps/cabs in TonePort Free)

Amp & Cabinet Models (MIDI CC 11/12)					
Value	Guitar Amp (Bank=CC66, Val 0)	Bass Amp* (Bank=CC66, Val 1)	Preamp* (Bank=CC66, Val 2)	Guitar Cabinet (Bank=CC67, Val 0)	Bass Cabinet** (Bank=CC67, Val 1)
0	No Amp	No Amp	American Classic	No Cabinet	No Cabinet
1	Tube Instrument Preamp	Line 6 Tube Preamp	Brit Classic	1x6 1960s Super O	1x12 Boutique
2	Line 6 21st Century Clean	Line 6 Classic Jazz	Lo-Fi	1x8 1960 Tiny Tweed	1x12 Motor City
3	Line 6 JTS-45	Line 6 Brit Invader	Vintage	1x10 1959 Gibtone	1x15 Flip Top
4	Line 6 Class A	Line 6 Super Thor	Modern	1x10 1960 G-Brand	1x15 Jazz Tone
5	Line 6 Mood	Line 6 Frankenstein	Console	1x12 2001 Line 6	1x18 Session
6	Line 6 Spinal Puppet	Line 6 Ebony Lux		1x12 1953 Small Tweed	1x18 Amp 360
7	Line 6 Chemical X	Line 6 Doppleganger		1x12 1964 Blackface 'Lux	1x18 California
8	Line 6 Insane	Line 6 Sub Dub		1x12 1960 Class A-15	1x18+12 Stadium
9	Line 6 Piezacooustic 2	1972 Amp 360		2x2 2001 Mini T	2x10 Modern UK
10	2001 Zen Master	2003 Jaguar		2x12 2001 Line 6	2x15 Doubleshow
11	1953 Small Tweed	1975 Alchemist		2x12 1965 Blackface	2x15 California
12	1958 Tweed B-Man	1974 Rock Classic		2x12 1996 Match Chief	2x15 Class A
13	1960 Tiny Tweed	1968 Flip Top		2x12 1987 Jazz Clean	4x10 Line 6
14	1964 Blackface 'Lux	1998 Adam and Eve		2x12 1967 Class A-30	4x10 Tweed
15	1965 Double Verb	1958 Tweed B-Man		4x10 2001 Line 6	4x10 Adam and Eve
16	1960 Two-Tone	1967 Silverface Bass		4x10 1958 Tweed B-Man	4x10 Silvercone
17	1973 Hiway 100	1964 Double Show		4x12 2001 Line 6	4x10 Session
18	1965 Plexi 45	1989 Eighties		4x12 1967 Green 20s	4x12 Hiway
19	1968 Plexi Lead 100	1973 Hiway 100		4x12 1968 Green 25s	4x12 Green 20s

GearBox Software Model Tables - continued

20	1968 Plexi Jump Lead	1971 Hiway 200		4x12 1978 Brit Celest T-75s	4x12 Green 25s
21	1968 Plexi Variac'd	1969 British Major		4x12 1996 Brit Celest V-30s	4x15 Big Boy
22	1990 Brit J-800	1968 Brit Bass		4x12 2001 Treadplate	8x10 Classic
23	1996 Brit JM Pre	2003 California		1x15 1962 Thunder	
24	1996 Match Chief	1998 Jazz Tone		2x12 1967 Wishbook	
25	1993 Match D-30	1978 Stadium		1x12 Boutique**	
26	2001 Treadplate Dual	2002 Studio Tone		1x12 Motor City	
27	1985 Cali Crunch	1967 Motor City		1x15 Flip Top	
28	1987 Jazz Clean	1965 Brit Class A100		1x15 Jazz Tone	
29	1993 Solo 100 Head			1x18 Session	
30	1960s Super O			1x18 Amp 360	

Amp & Cabinet Models (MIDI CC 11/12)					
Value	Guitar Amp	Bass Amp*	Pre Amp	Cabinet	Bass Cabinet**
31	1960 Class A-15			1x18 California	
32	1967 Class A-30 Top Boost			1x18+12 Stadium	
33	Line 6 Agro			2x10 Modern UK	
34	Line 6 Lunatic			2x15 Doubleshow	
35	Line 6 Treadplate			2x15 California	
36	Line 6 Variax Acoustic			2x15 Class A	
37	2002 Bomber Uber			4x10 Line 6	
38	2003 Connor 50			4x10 Tweed	
39	2003 Deity Lead			4x10 Adam and Eve	
40	2003 Deity's Son			4x10 Silvercone	
41	2002 Angel P-Ball			4x10 Session	
42	1987 Brit Gain Silver J			4x12 Hiway	
43	1992 Brit Gain J-900 Clean			4x12 Green 20s	
44	1992 Brit Gain J-900 Dist			4x12 Green 25s	
45	2003 Brit Gain J-2000			4x15 Big Boy	

GearBox Software Model Tables - continued

46	2001 Cali Diamond Plate				
47	2002 Mississippi Criminal				
48	Line 6 Big Bottom				
49	Line 6 Chunk Chunk				
50	Line 6 Fuzz				
51	Line 6 Octone				
52	Line 6 Smash				
53	Line 6 Sparkle Clean				
54	Line 6 Throttle				
55	2002 Bomber X-TC				
56	2003 Deity Crunch				
57	1963 Blackface Vibro				
58	1967 Double Show				
59	1972 Silverface Bass				
60	1996 Mini Double				
61	1960 Gibtone Expo				
62	1968 Brit Plexi Bass 100				
63	1969 Brit Plexi Lead 200				
64	1967 Wishbook Silver 12				
65	1962 Super O Thunder				
66	Line 6 Bayou				
67	Line 6 Crunch				
68	Line 6 Purge				
69	Line 6 Sparkle				
70	Line 6 Super Clean				
71	Line 6 Super Sparkle				
72	Line 6 Twang				
73	Line 6 Tube Preamp*				
74	Line 6 Classic Jazz				

GearBox Software Model Tables - continued

Amp & Cabinet Models (MIDI CC 11/12)					
Value	Guitar Amp	Bass Amp*	Pre Amp	Cabinet	Bass Cabinet**
75	Line 6 Brit Invader				
76	Line 6 Super Thor				
77	Line 6 Frankenstein				
78	Line 6 Ebony Lux				
79	Line 6 Doppleganger				
80	Line 6 Sub Dub				
81	1972 Amp 360				
82	2003 Jaguar				
83	1975 Alchemist				
84	1974 Rock Classic				
85	1968 Flip Top				
86	1998 Adam and Eve				
87	1958 Tweed B-Man				
88	1967 Silverface Bass				
89	1964 Double Show				
90	1989 Eighties				
91	1973 Hiway 100				
92	1971 Hiway 200				
93	1969 British Major				
94	1968 Brit Bass				
95	2003 California				
96	1998 Jazz Tone				
97	1978 Stadium				
98	2002 Studio Tone				
99	1967 Motor City				
100	1965 Brit Class A100				
101	Citrus D-30				

GearBox Software Model Tables - continued

102	L6 Modern Hi Gain				
103	L6 Boutique #1				
104	Class A-30 Fawn				
105	Brit Gain 18				
106	Brit J-2000 #2				

* **Bass Amps** can be selected by using CC 11 or 12 and selecting values within the Guitar Amp range (73-100), or by first switching to the Bass Amp bank (Bank Select CC 66, Value 1), and then selecting values in the Bass Amp range (CC 11 or 12 and Values 0-28) .

* **Preamps** can be selected by first sending an amp Bank Select (CC 66 with a Value of 2), and then selecting CC11 or 12 and the Values 0-5.

** **Bass Cabs** can be selected by using CC 71 and a value within the Guitar Cab range (25-46), or by first switching to the Bass Cab bank (Bank Select CC 67, Value 1), and then selecting values in the Bass Cab range (CC 71, Values 0-22) .

Mic & Effects Models

Model Pack Set Index	
	Power Pack (included with all PODxt devices)
	FX Junkie

Value	Mic (on guitar cab) - CC 70	Mic (on bass cab) - CC 70	Stomp - CC 75	Modulation - CC 58	Delay - CC 88	Reverb - CC 37	Wah - CC 91
0	57 On Axis	Tube 47 Close	Facial Fuzz	Sine Chorus	Analog Delay	'Lux Spring	Vetta Wah
1	57 Off Axis	Tube 47 Far	Fuzz Pi	Analog Chorus	Analog Delay w/Mod	Standard Spring	Fassel
2	421 Dynamic	112 Dynamic	Screamer	Line 6 Flanger	Tube Echo	King Spring	Weeper
3	67 Condenser	20 Dynamic	Classic Distortion	Jet Flanger	Multi-Head Delay	Small Room	Chrome
4			Octave Fuzz	Phaser	Sweep Echo	Tiled Room	Chrome Custom
5			Blue Comp	U-Vibe	Digital Delay	Brite Room	Throaty
6			Red Comp	Opto Tremolo	Stereo Delay	Dark Hall	Conductor
7			Vetta Comp	Bias Tremolo	Ping Pong Delay	Medium Hall	Colorful
8			Auto Swell	Rotary Drum + Horn	Reverse Delay	Large Hall	

GearBox Software Model Tables - continued

9			Auto Wah	Rotary Drum	Echo Platter	Rich Chamber	
10			Killer Z	Auto Pan	Tape Echo	Chamber	
11			Tube Drive	Analog Square Chorus	Low Rez	Cavernous	
12			Vetta Juice	Stereo Square Chorus	Phaze Eko	Slap Plate	
13			Boost + EQ	Stereo Expo Chorus	Bubble Echo	Vintage Plate	
14			Blue Comp Treb	Random Chorus		Large Plate	
15			Dingo Tron	Stereo Square Flange			
16			Clean Sweep	Expo Flange			
17			Seismik Synth	Lumpy Phase			
18			Double Bass	Hi Talk			
19			Buzz Wave	Sweeper			
20			Rez Synth	POD Purple X			
21			Saturn 5 Ring Mod	Random S & H			
22			Synth Analog	Tape Eater			
23			Synth FX	Warble-Matic			
24			Synth Harmony				
25			Synth Lead				
26			Synth String				
27			Bass Overdrive				
28			Bronze Master				
29			Sub Octaves				
30			Bender				
126			Female De-esser				
127			Male De-esser				

Effects Model Tables (All Line 6 Products)

Note - When GearBox is in Dual Tone Mode, only Tone 1 receives and responds to incoming MIDI control messages.

Stomp Category Models							
CC #75	CC #74	CC #79	CC #80	CC#81	CC#82	CC#83	Model Pack
Model Select	Pre/Post	Param 2	Param 3	Param 4	Param 5	Param 6	Dependency
Facial Fuzz	Pre/Post	Drive	Gain	Tone	n/a	n/a	
Fuzz Pi	Pre/Post	Drive	Gain	Tone	n/a	n/a	
Screamer	Pre/Post	Drive	Gain	Tone	n/a	n/a	
Classic Dist	Pre/Post	Drive	Gain	Tone	n/a	n/a	PowerPack
Octave Fuzz	Pre/Post	Drive	Gain	Tone	n/a	n/a	PowerPack
Blue Comp	Pre/Post	Sustain	Level	n/a	n/a	n/a	PowerPack
Red Comp	Pre/Post	Sustain	Level	n/a	n/a	n/a	
Vetta Comp	Pre/Post	Sens	Level	n/a	n/a	n/a	PowerPack
Auto Swell	Pre/Post	Ramp	Depth	n/a	n/a	n/a	PowerPack
Auto Wah	Pre/Post	Sens	Q	n/a	Mid	n/a	FX Junkie
Killer Z	Pre/Post	Drive	Contour	Gain	Bass	n/a	FX Junkie
Tube Drive	Pre/Post	Drive	Treble	Gain	n/a	n/a	FX Junkie
Vetta Juice	Pre/Post	Amount	Level	n/a	Mid	Mid Freq.	FX Junkie
Boost + EQ	Pre/Post	Drive	Bass	Treble	n/a	n/a	FX Junkie
Blue Comp Treb	Pre/Post	Level	Sustain	n/a	n/a	n/a	FX Junkie
Dingo Tron	Pre/Post	n/a	Sensitivity	Q	n/a	n/a	FX Junkie
Clean Sweep	Pre/Post	Decay	Sens	Q	Mix	n/a	FX Junkie
Seismik Synth	Pre/Post	Wave	n/a	n/a	Mix	n/a	FX Junkie
Double Bass	Pre/Post	-1 Octave	-2 Octave	n/a	Mix	n/a	FX Junkie
Buzz Wave	Pre/Post	Wave	Filter	Decay	Mix	n/a	FX Junkie
Rez Synth	Pre/Post	Wave	Filter	Decay	Mix	n/a	FX Junkie
Saturn 5 Ring Mod	Pre/Post	Wave	n/a	n/a	Mix	n/a	FX Junkie
Synth Analog	Pre/Post	Wave	Filter	Decay	Mix	n/a	FX Junkie
Synth FX	Pre/Post	Wave	Filter	Decay	Mix	n/a	FX Junkie
Synth Harmony	Pre/Post	Interval 1	Filter	Wave	Mix	n/a	FX Junkie
Synth Lead	Pre/Post	Wave	Filter	Decay	Mix	n/a	FX Junkie
Synth String	Pre/Post	Wave	Filter	Attack	n/a	n/a	FX Junkie
Female De-Esser	Pre/Post	Amount	n/a	n/a	n/a	n/a	

Effects Model Tables - continued

Male De-Esser	Pre/Post	Amount	n/a	n/a	n/a	n/a	
Bass Overdrive	Pre/Post	Bass	n/a	Drive	Gain	n/a	
Bronze Master	Pre/Post	Drive	Tone	n/a	Blend	n/a	
Sub Octaves	Pre/Post	-1 Oct Gn	-2 Oct Gn	n/a	Mix	n/a	
Bender	Pre/Post	Position	Heel	Toe	Mix	n/a	

Modulation Category Models						
CC #58	CC #57	CC #52	CC #56	CC #53	CC #54	Model Pack
Model Select	Pre/Post	Param 2	Vol./Mix	Param 3	Param 4	Dependency
Sine Chorus	Pre/Post	Depth	Mix	Bass	Treble	
Analog Chorus	Pre/Post	Depth	Mix	Bass	Treble	
Line 6 Flanger	Pre/Post	Depth	Mix	n/a	n/a	
Jet Flanger	Pre/Post	Depth	Mix	Fdbk	Manual	
Phaser	Pre/Post	n/a	Mix	n/a	n/a	
Vibe Phase	Pre/Post	Depth	Mix	n/a	n/a	PowerPack
Opto Trem	Pre/Post	Wave	Mix	n/a	n/a	
Bias Trem	Pre/Post	Wave	Mix	n/a	n/a	PowerPack
Rotary Drum+Horn	Pre/Post	n/a	Mix	Tone	n/a	
Rotary Drum	Pre/Post	n/a	Mix	Tone	n/a	PowerPack
Auto Pan	Pre/Post	Depth	Mix	n/a	n/a	PowerPack
Analog Square Chorus	Pre/Post	Depth	Mix	Bass	Treble	FX Junkie
Stereo Square Chorus	Pre/Post	Depth	Mix	Predelay	Feedback	FX Junkie
Stereo Expo Chorus	Pre/Post	Depth	Mix	Predelay	Feedback	FX Junkie
Random Chorus	Pre/Post	Depth	Mix	Bass	Treble	FX Junkie
Stereo Square Flange	Pre/Post	Depth	Mix	Predelay	Feedback	FX Junkie
Expo Flange	Pre/Post	Depth	Mix	Predelay	Feedback	FX Junkie
Lumpy Phase	Pre/Post	Depth	Mix	Bass	Treble	FX Junkie
Hi Talk	Pre/Post	Depth	Mix	Q	n/a	FX Junkie
Sweeper	Pre/Post	Depth	Mix	Q	Frequency	FX Junkie
POD Purple X	Pre/Post	Fdbk	Mix	Depth	n/a	FX Junkie
Random S & H	Pre/Post	Depth	Mix	Q	n/a	FX Junkie
Tape Eater	Pre/Post	Fdbk	Mix	Flutter	Dist	FX Junkie
Warble-Matic	Pre/Post	Depth	Mix	Q	n/a	FX Junkie

Delay Category Models						
CC #88 Model Select	CC #87 Pre/Post	CC #33 Param 2	CC #34 Vol./Mix	CC #35 Param 3	CC #85 Param 4	Model Pack Dependency
Analog	Pre/Post	Fdbk	Mix	Bass	Treble	PowerPack
Analog w/Mod	Pre/Post	Fdbk	Mix	ModSpd	Depth	
Tube Echo	Pre/Post	Fdbk	Mix	Flut	Drive	
Multi-Head	Pre/Post	Fdbk	Mix	Heads	Flutter	PowerPack
Sweep Echo	Pre/Post	Fdbk	Mix	Speed	Depth	PowerPack
Digital	Pre/Post	Fdbk	Mix	Bass	Treble	
Stereo	Pre/Post	Offst	Mix	Fdbk L	Fdbk R	PowerPack
Ping Pong	Pre/Post	Fdbk	Mix	Offst	Spread	PowerPack
Reverse	Pre/Post	Fdbk	Mix	n/a	n/a	PowerPack
Echo Platter	Pre/Post	Fdbk	Mix	Heads	Flutter	FX Junkie
Tape Echo	Pre/Post	Fdbk	Mix	Bass	Treble	FX Junkie
Low Res	Pre/Post	Fdbk	Mix	Tone	Bits	FX Junkie
Phaze Echo	Pre/Post	Fdbk	Mix	Speed	Depth	FX Junkie
Bubble Echo	Pre/Post	Fdbk	Mix	Speed	Depth	FX Junkie

Reverb Category Models						
CC#37 Model Select	CC#41 Pre/Post	CC#38 Decay	CC#18 Mix	CC#39 Tone	CC#40 PreDelay	Model Pack Dependency
Lux Spring	Pre/Post	Decay	Mix	Tone	n/a	
Standard Sping	Pre/Post	Decay	Mix	Tone	n/a	PowerPack
King Spring	Pre/Post	Decay	Mix	Tone	n/a	PowerPack
Small Room	Pre/Post	Decay	Mix	Tone	PreDelay	
Tiled Room	Pre/Post	Decay	Mix	Tone	PreDelay	PowerPack
Brite Room	Pre/Post	Decay	Mix	Tone	PreDelay	
Dark Hall	Pre/Post	Decay	Mix	Tone	PreDelay	PowerPack
Medium Hall	Pre/Post	Decay	Mix	Tone	PreDelay	
Large Hall	Pre/Post	Decay	Mix	Tone	PreDelay	PowerPack
Rich Chamber	Pre/Post	Decay	Mix	Tone	PreDelay	PowerPack
Chamber	Pre/Post	Decay	Mix	Tone	PreDelay	PowerPack
Cavernous	Pre/Post	Decay	Mix	Tone	PreDelay	
Slap Plate	Pre/Post	Decay	Mix	Tone	PreDelay	
Vintage Plate	Pre/Post	Decay	Mix	Tone	PreDelay	PowerPack
Large Plate	Pre/Post	Decay	Mix	Tone	PreDelay	PowerPack

Effects Model Tables - continued

Wah Category Models			
CC#91 Model Select	CC#43 On/Off	CC#4 Position	Model Pack Dependency
Vetta Wah	On/Off	Position	
Jen Fassel	On/Off	Position	PowerPack
Weeper	On/Off	Position	
Chrome	On/Off	Position	PowerPack
Chrome Custom	On/Off	Position	PowerPack
Throaty	On/Off	Position	PowerPack
Conductor	On/Off	Position	PowerPack
Colorful	On/Off	Position	PowerPack