

INTRODUCTION

Thank you for purchasing the ROLLS MP13 MINI-MIC Microphone Preamp. The MP13 uses a servo balanced instrumentation amplifier for studio grade performance in a small package. This equates to a 40db better common mode rejection ratio (CMRR) than transistor inputs used by most companies on mic inputs. It also means much lower distortion. The clearer sound with more "air" puts the MP13 in a class with much higher priced units.

WARRANTY

For complete information on the Rolls 1 Year Warranty, and to register this product, see our website at www.rolls.com.

FEATURES

- XLR and 1/8" Mic Inputs
- XLR and 1/4" Outputs
- Gain Control
- Clip LED indicator
- 1/4" Output Drives Stereo Headphones
- +21 Volt Phantom Power - available for 1/8" microphones

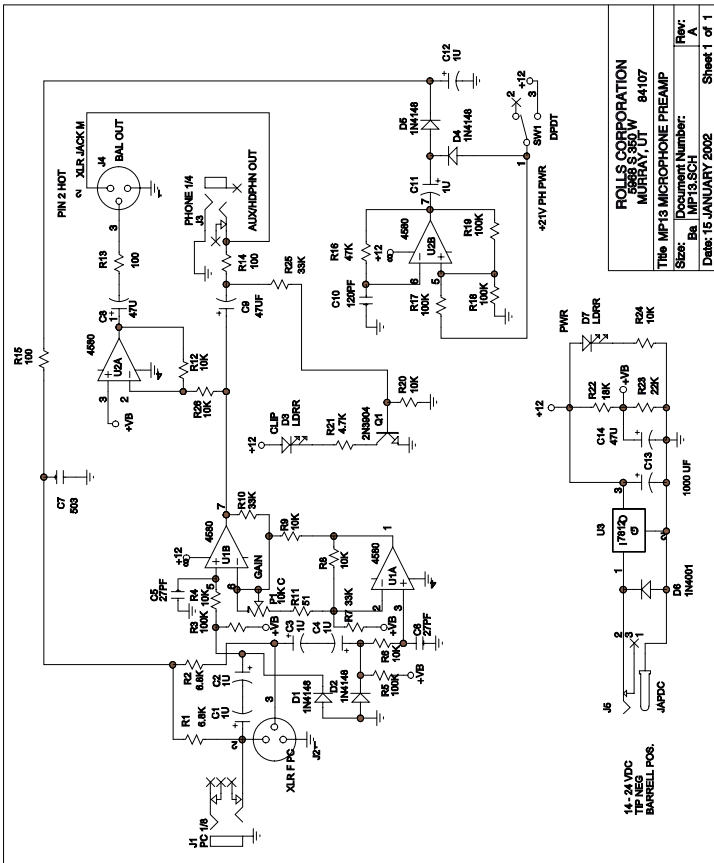
DESCRIPTION

INPUT: 1/8" (3.5mm) and female XLR jack for signal input.
OUTPUT: 1/4" and male XLR jack for signal output. May be connected to stereo headphones for personal monitoring.
POWER: Sleeve positive barrel jack for connection to the AC power adapter.

GAIN: Controls the amount of signal increase to the MP13.
CLIP: LED for indicating circuit clipping. Indicates distortion is possible.

PHANTOM POWER: When pressed in, applies +36 volts of phantom powering to the XLR input.
PWR: LED for indicating power is applied to the MP13.

SCHEMATIC



ROLLS CORPORATION
 9988 S 350 W
 MURRAY, UT 84107
 Title: MP13 MICROPHONE PREAMP
 Size: Document Number:
 Date: 15 JANUARY 2002
 Rev: A
 Sheet 1 of 1

... anywhere you need a clean preamplifier for your favorite dynamic or condenser microphone

ROLLS

- Home
 - Studio
 - Broadcast

MP13 Mini mic Preamp

MP13 Mic Preamp

ROLLS

MP13 MINI-MIC PREAMP MICROPHONE PREAMP

- XLR and 1/8" Inputs
- XLR and 1/4" Outputs
- Gain Control
- Clip LED indicator
- +21 Volt Phantom Power

The MP13 is designed to provide simple, inexpensive microphone preamplification for a variety of applications. The unit has both XLR and 1/4" inputs and outputs, a single Gain control with a Clip LED indicator, and Phantom powering is included for use with a condenser microphone. The 1/4" output is specially designed for use as either a mono unbalanced output, or a stereo headphone output.

SPECIFICATIONS

Connectors: Inputs; XLR, 1/8" (3.5mm) TRS balanced Mic In
 Outputs: XLR balanced, 1/4" unbal. Aux/Hdphn
 10K Ohms bal, unbal.
 Input Impedance: +4 dBV XLR bal, +10 dBV unbal.
 Max Input Level: 60 dB/XLR, 54 dB 1/4"
 Max Gain: <10 deg, 20 Hz - 20 kHz
 Phase Shift: -108 dB max.
 EIN: <.01%
 THD: <.01%
 IMD (SMPTE) > 80dB
 CMRR: +21 Volts, 6 mA
 Phantom Power: 12 VDC adapter
 Power: 1 lbs (.45Kg)
 Weight: 3.4" x 4.2" x 1.4"
 Size:

CE
ROLLS

Rolls Corporation
 Salt Lake City, UT
 2/02

MP13 Mic Preamp

